



# Rop Cam<sup>SW-8000P</sup>

## Specifications

Fundus Image Resolution:

- Center field of view 30 LP/mm
- Middle field of view ( 22.5°) 20 LP/mm
- Edge field of view ( 45°) 15 LP/mm

**Fundus imaging range:**

- 130°

**Camera:**

- High resolution, High sensitivity, Medical grade CMOS.

**Resolution:**

- 4 Megapixels

**Shooting method:**

- Single, continuous shooting, Video mode.

Video image resolution and frame rate:

- Resolution: 2048x2048, 30fps.

**Illumination Source:**

- New LED light source, wavelength is 480-700nm
- Harmful blue-light band was removed so there is no ultraviolet photochemistry damage and near infrared photothermic damage.
- The circular light field has uniform illumination, better for the image quality.
- Light source intensity 0 - 48000 Lux.
- Light source automatic protection
- Color rendering index (CRI) is not less than 85, color temperature is 2700K.
- Light source brightness adjustment: light source intensity is numerically displayed, 256 levels continuously adjustable.

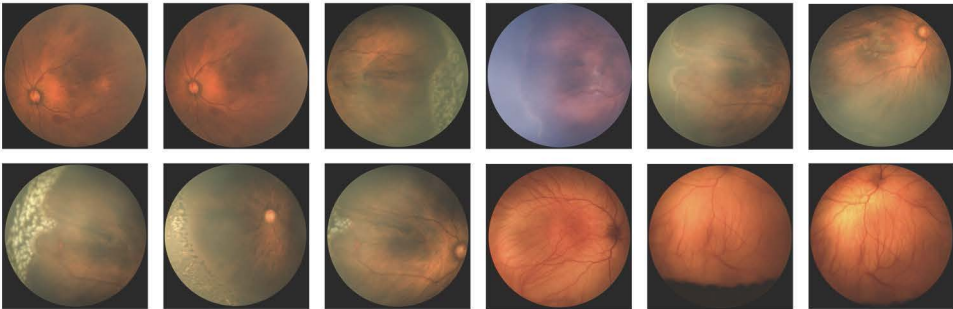


**Rop Cam**<sup>SW-8000P</sup>





# Rop Cam<sup>SW-8000P</sup>



**Software system:**

- Any two pictures can be printed side by side.
- Contrast, brightness, red, green and blue three-tone pitches adjustment.
- Annotations, markers, enlarged local lesions and management functions.

**Database:**

- Name, ID, date of birth, etc.
- It can classify and store examined patients by different kinds of patients and doctors according to their needs, encrypt and play back.
- Images and data can be imported and exported in separate batches.
- Local data storage and backup management.