

## Technical Parameter

	SK-650A	SK-660A	SK-650B
Optical lens	Aspherics system		
Test mode	Non-mydriatric fundus		Non-mydriatric and FFA
Min.Pupil Size	3.3mm		
Fundus Observation	Switching Optical anterior-posterior compensation lens		Moved platform
Focus	Split-line aligning focusing		
Focus Mode	Manual	Auto / Manual	Manual
Capture	Manual	Auto / Manual	Manual
Digital Camera	CANON EOS Technology		
Color Image Resolution	5184*3456		
Monochrome Image resolution	/	/	1360*1024
Compensation range	-25D ~ +30D		
Fundus observation para-position indication	Dots overlap		
Fixation targe	9 internal fixation target		External eye fixation lamp & 9 internal fixation target
Maximum angle of view	45°		
Optical head tilting	/	/	Horizontal±30° Vertical±12.5°
Working distance	40mm ± 2mm		
software	Support Dicom 3.0, support hospital HIS/PACS system. Image processing, easily operate, strong analysis, support fundus Mosaic, image post processing, measurement, patient profile management		

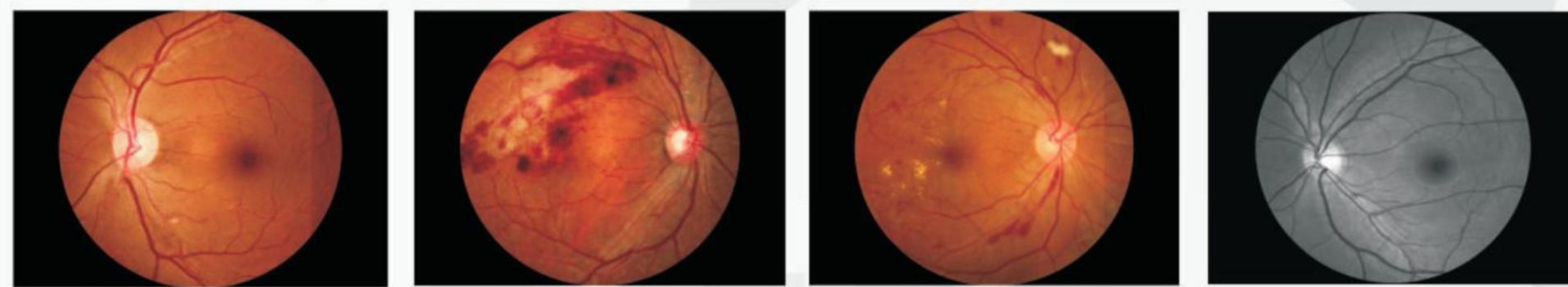
## SK Series Non-mydriatric Fundus Camera



### Advantages of Non-mydratic Fundus Camera

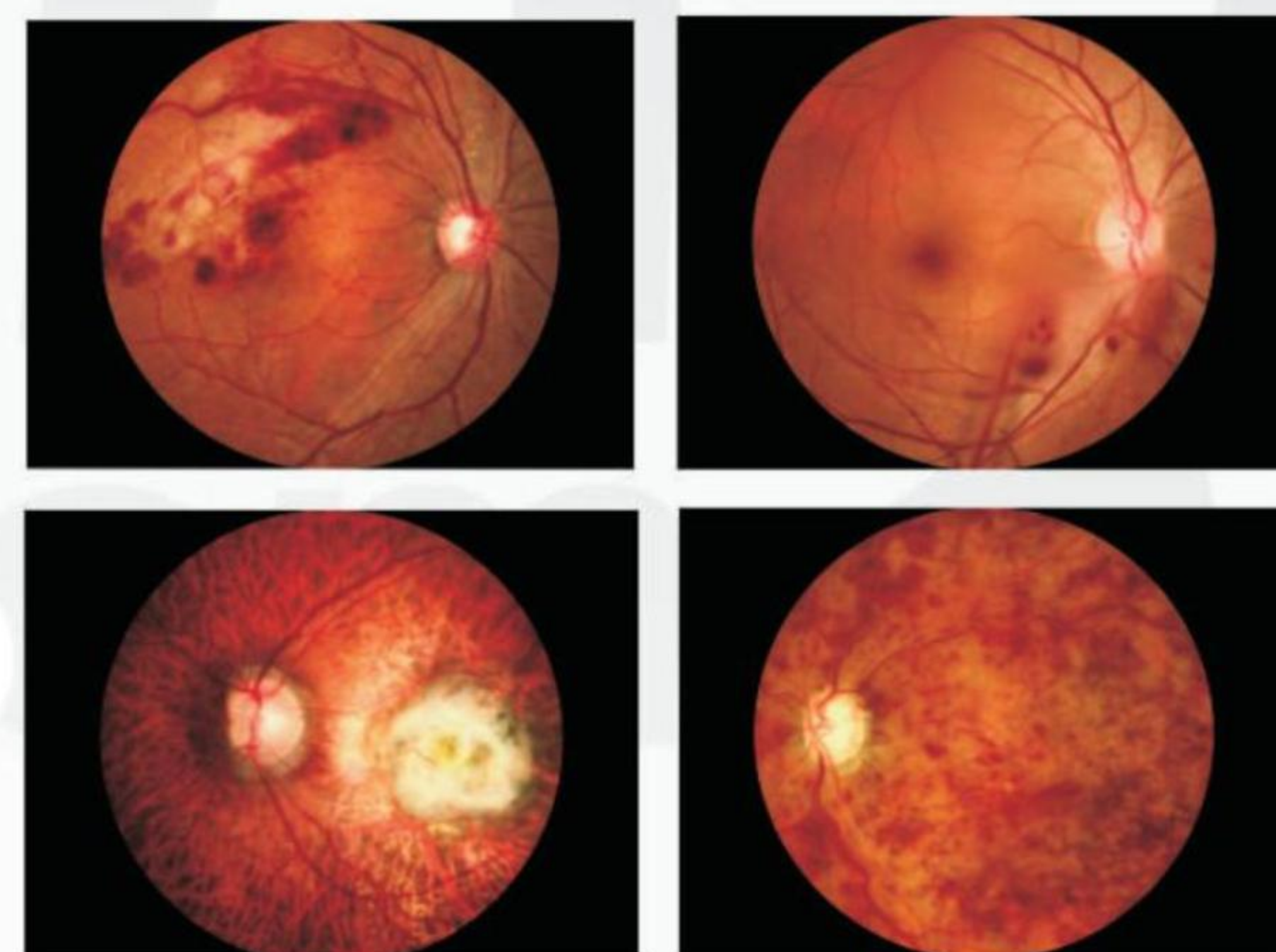
- Reduce the pain and inconvenience of patient
- Save time for patients and doctors, dilating need about 20 minutes
- Won't affect patients' activity which improving their compliance
- Non-mydratic image with reliable quality

### High quality image

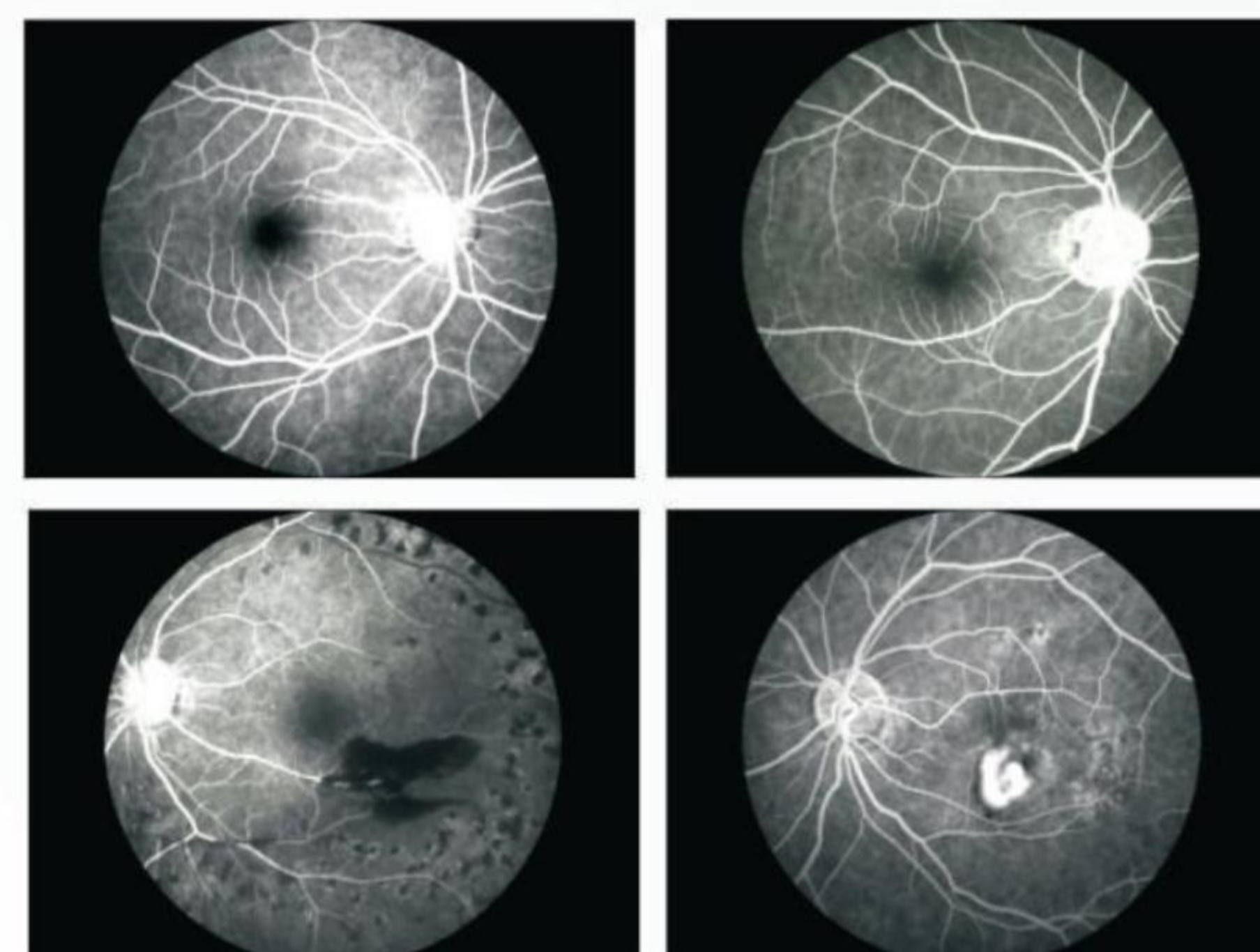


Normal retinal image    Branch retinal vein occlusion    Diabetes phase II    Red-free

### SK-650A



### SK-650B(with FFA)



### ▶ 45° full-circle design

New optical design guarantee 45° full-circle image and avoid losing fundus information

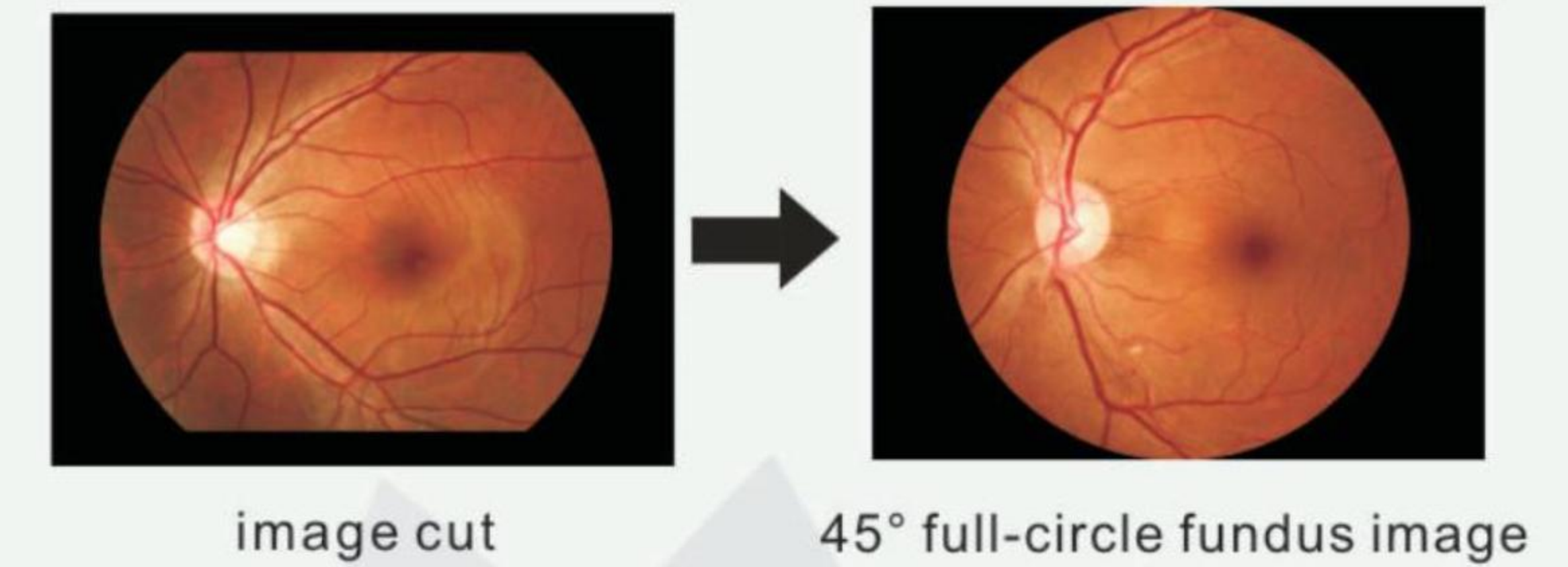
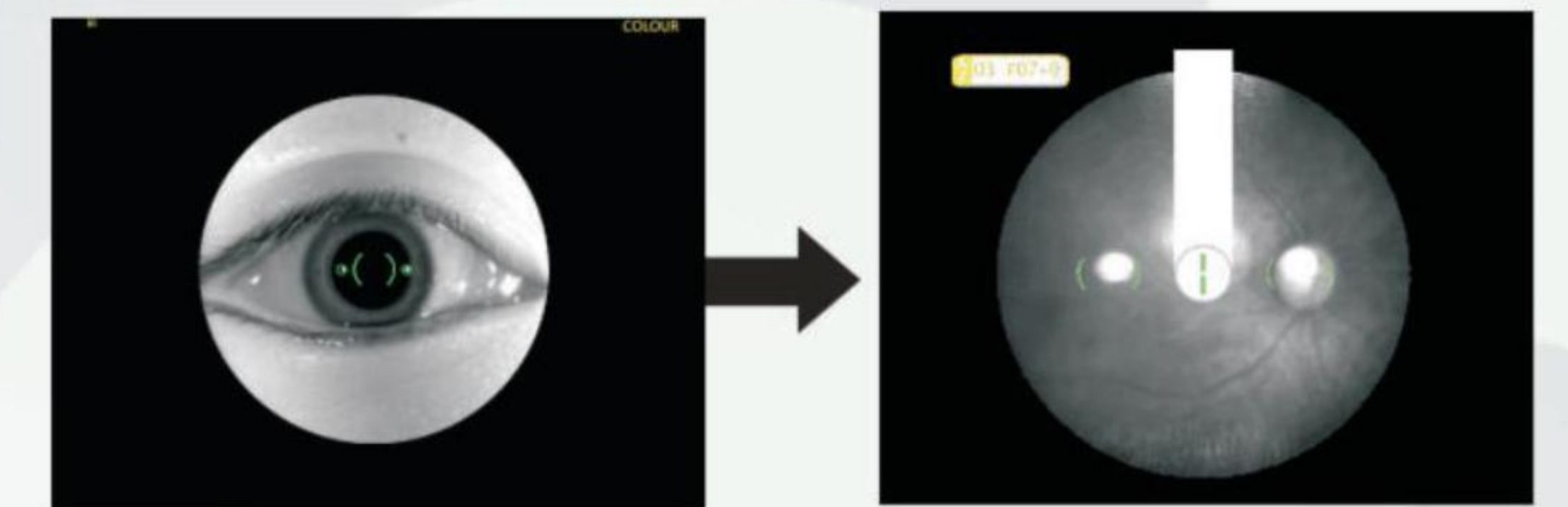


image cut                      45° full-circle fundus image

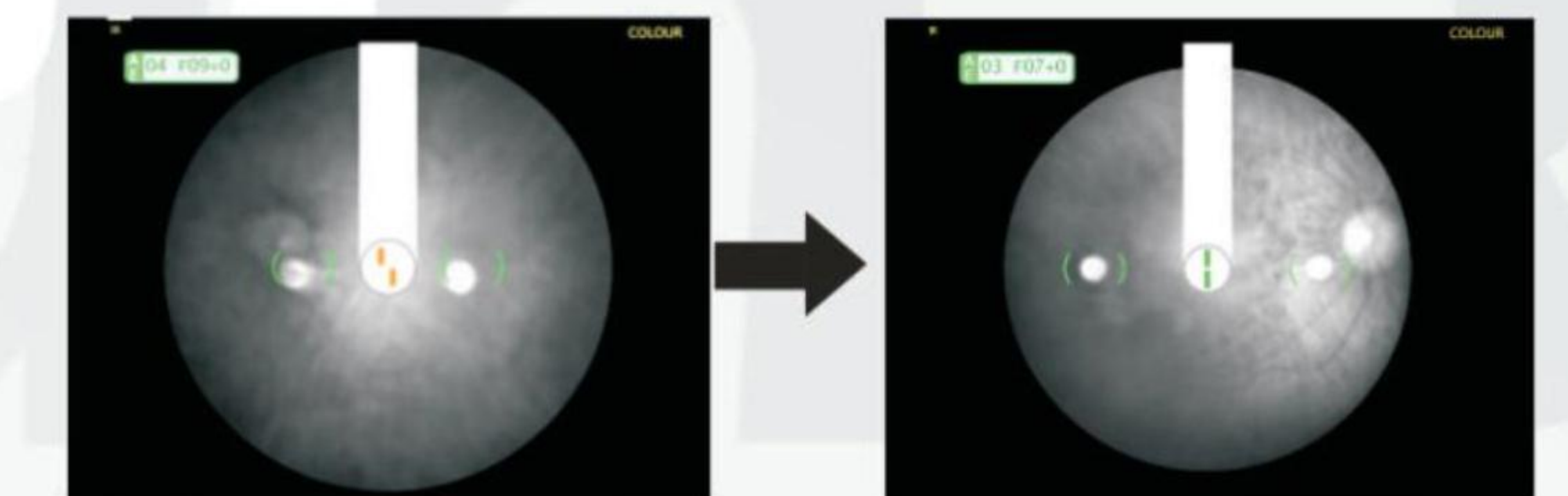
### ▶ Switching anterior-posterior para-position compensation lens

Using additional compensation mode of fundus para-position, cleverly solve the problem of para-position blind area from the ocular surface to fundus, which make the fundus para-position becomes easier



### ▶ Split-line aligning focus

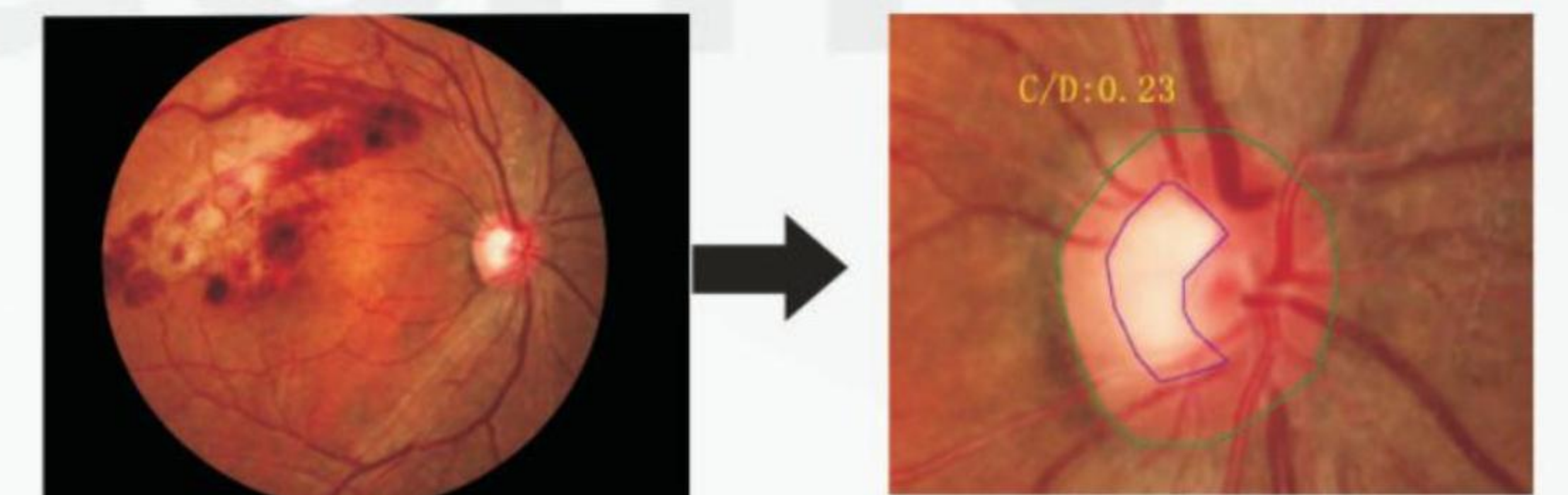
Using split-line aligning focus method which indicates focus status more objectively compared to the traditional one which can avoid turbid eye medium holding back the image focus. Even under the black background such as FFA, Split-line aligning system still helpful for clear images capturing.



split-line unaligned                      split-line aligned

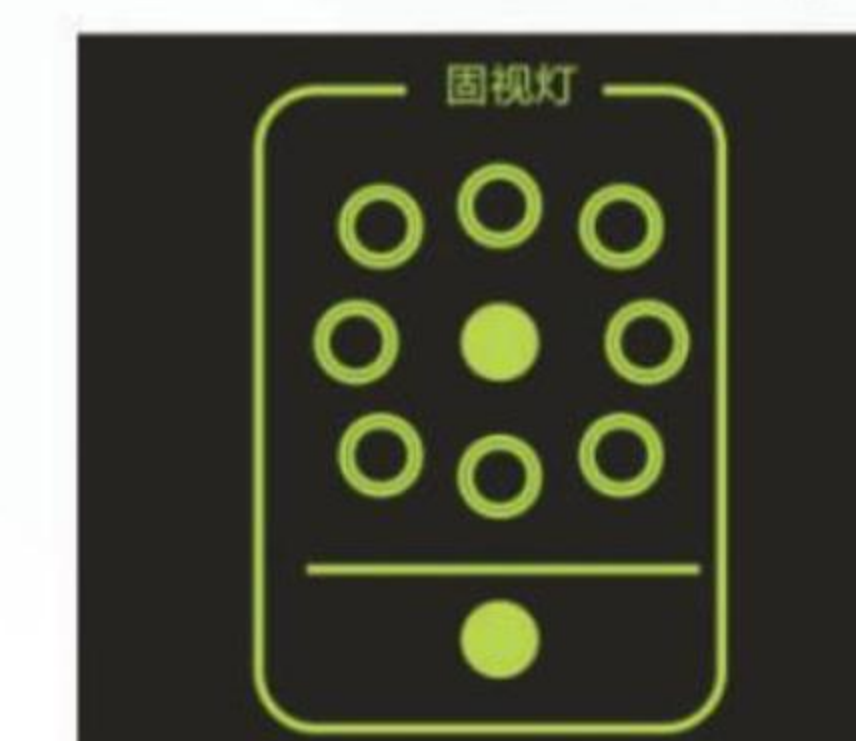
### ▶ Exposure intensity automatic controlled

The system identify patients' retinal status and control exposure intensity automatically which realize the best exposure condition. It assures to get perfect image every time.

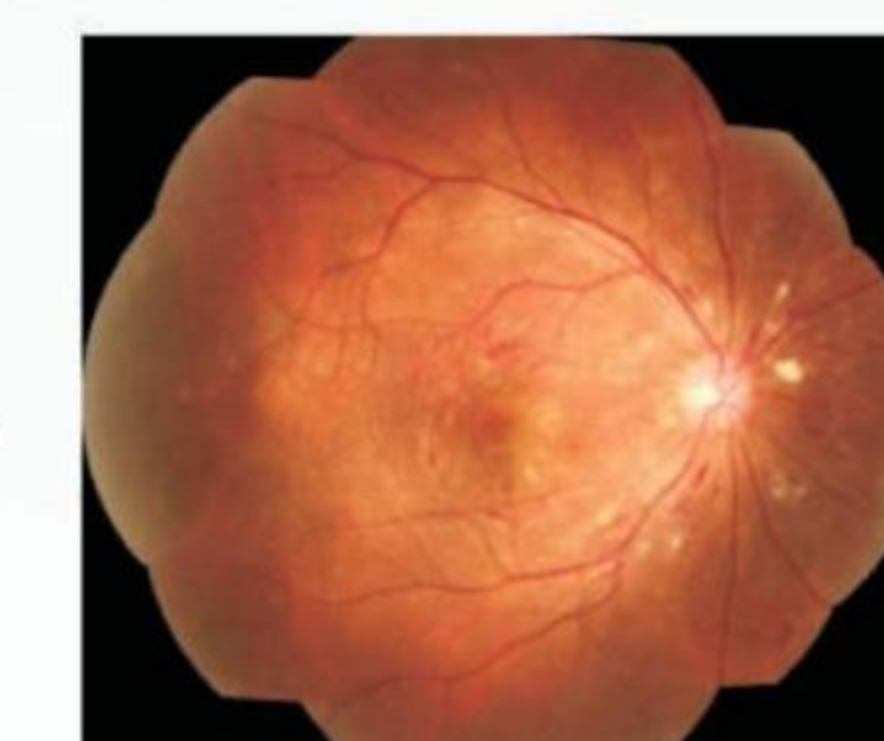


Cup/Disc measurement

### 9 internal fixation target



### Seamless mosaic automatically



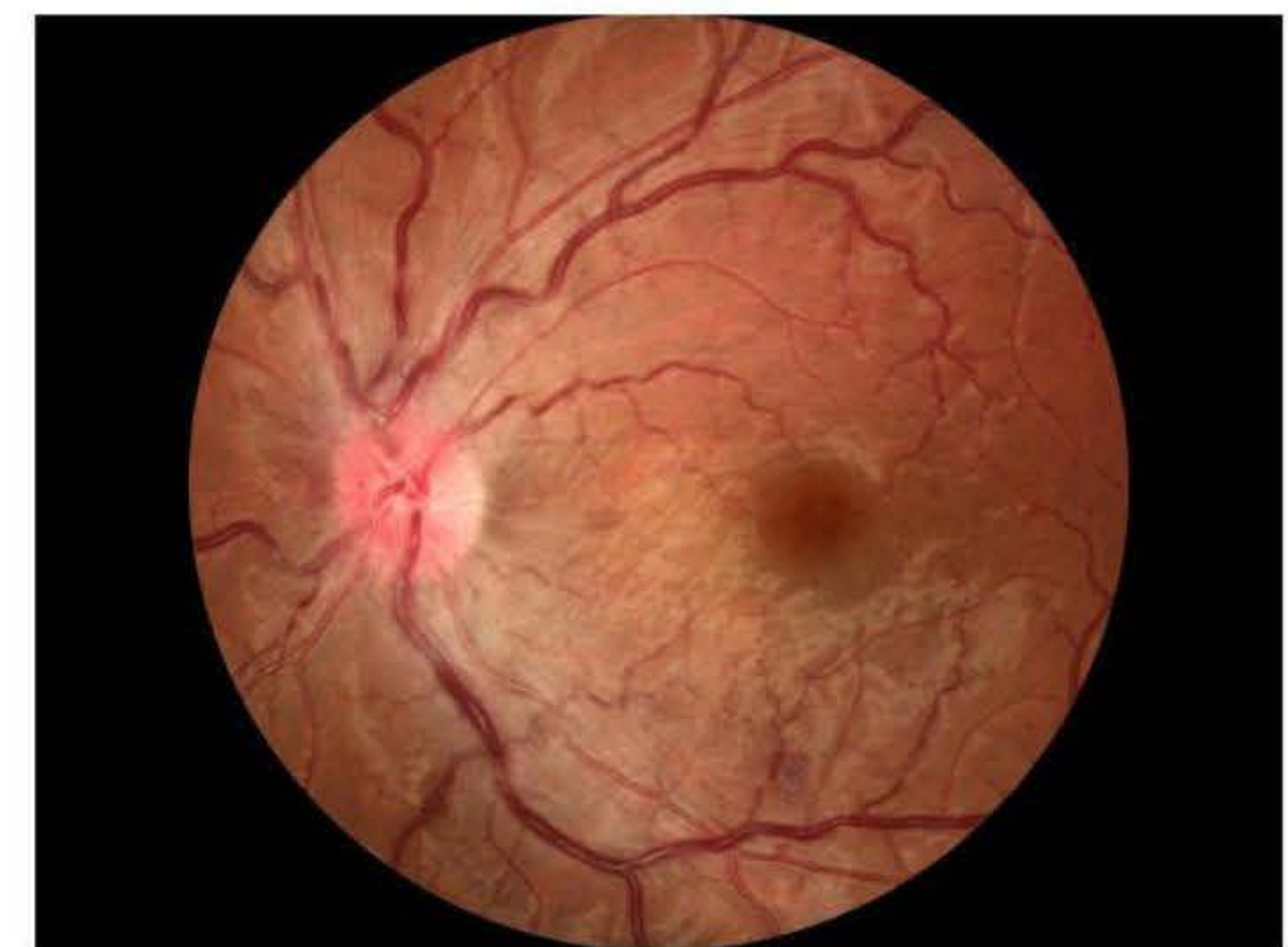
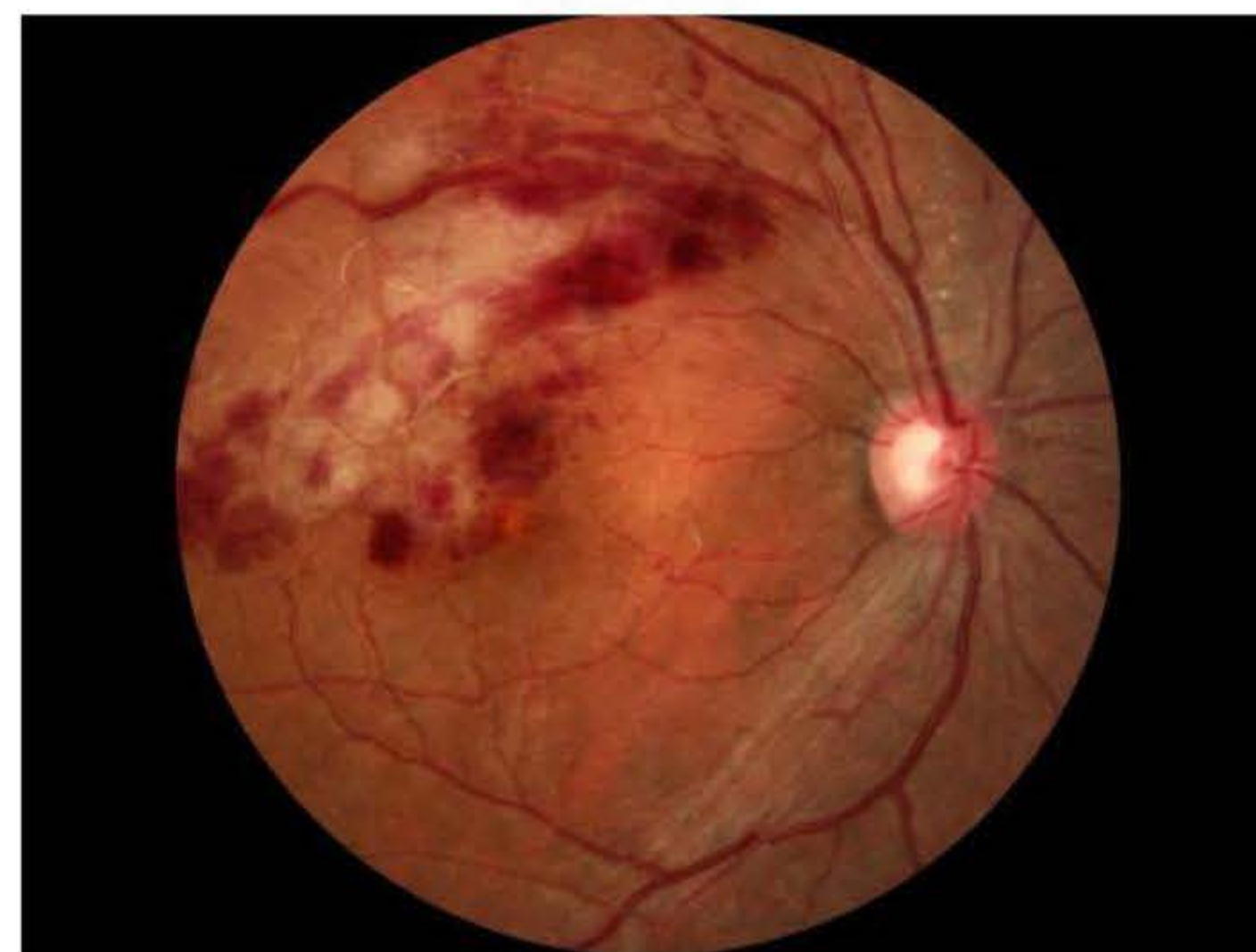
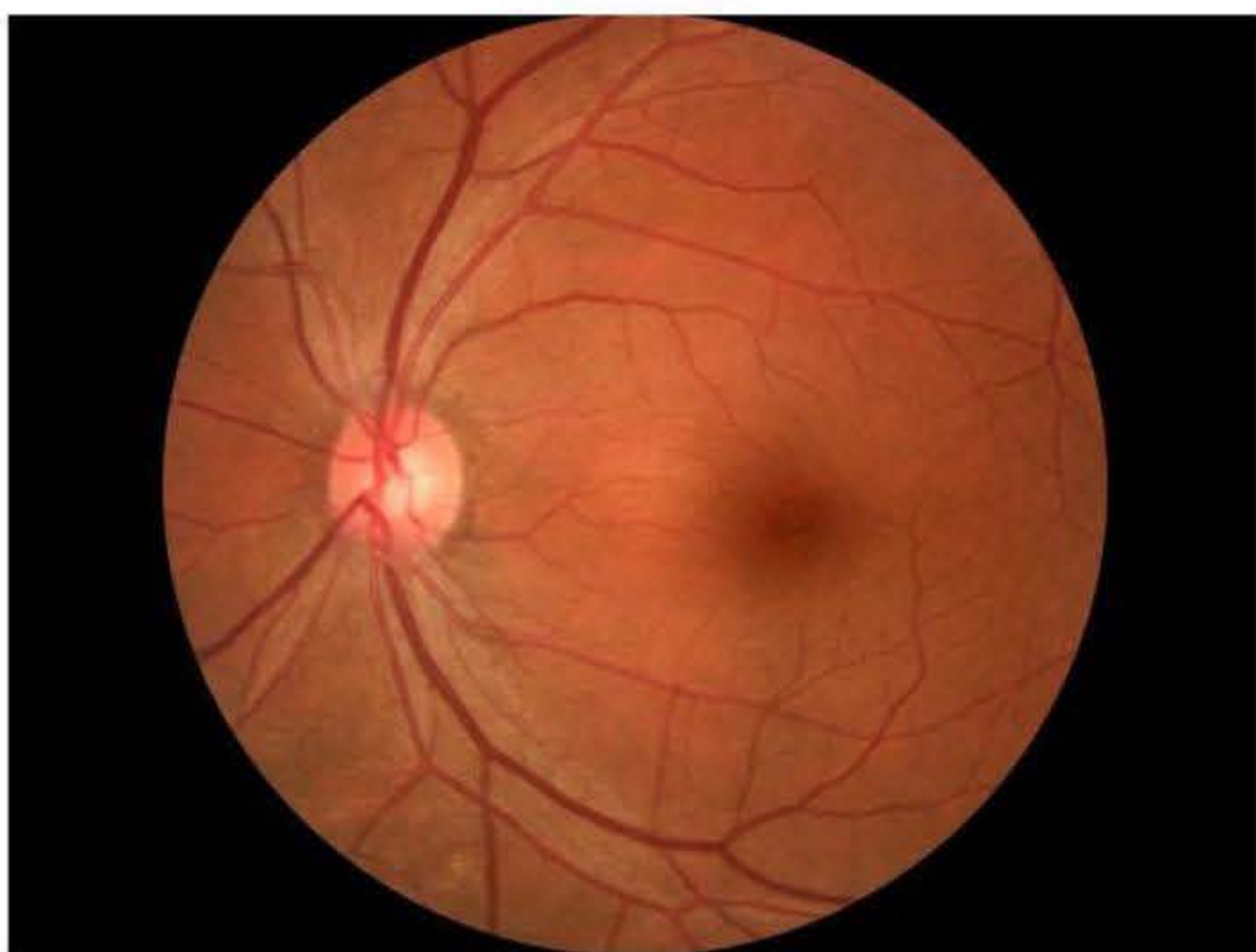
# Fundus Camera SK-660A



- **AUTO-FOCUS, AUTO-CAPTURE**

Accurately using split-line aligning focus indication to get split line automatically aligned and focus status, can get the clearest fundus picture when taking picture automatically.

- HIGH-RESOLUTION IMAGE
- ANTERIOR SEGMENT CAPTURE
- SEAMLESS AUTOMATIC PUZZLE



	Optical Lens	Test Mode	Fixation Light	Focus	Capture
SK-660A	Aspherics system	Anterior Segment, Color Picture	9-Point	Auto	Auto