



SOCT Copernicus  
**REVO**

AS SIMPLE AS PRESSING *the start button*



**OPTOPOL**  
technology

# SOCT Copernicus **REVO** *Intuition starts again*

Our supreme experience in Spectral Domain OCT technology allows us to provide you with the modern OCT that offers remarkable simplicity of operation. The SOCT Copernicus REVO will expand the daily demands of any modern practice.

## OCT made simple as never before

Position the patient and press the START button to acquire examinations of both eyes.

The SOCT Copernicus REVO, using vocal messages, guides the patient through the process increasing comfort and reducing patient chair time.

## New OCT standard - All functionality In One device.

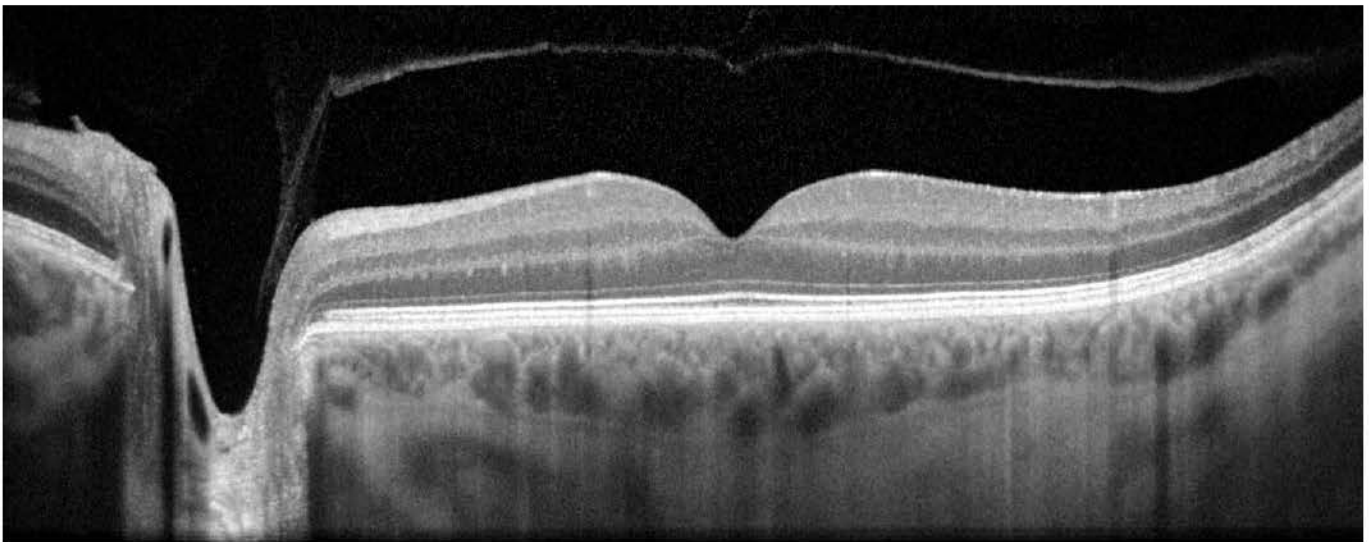
Once again Revo goes beyond the limits of standard OCT. With its new software, our Revo enables a full functionality from the retina to the cornea. It brings benefits by combining the potential of several devices. With REVO you can measure, quantify, calculate and track changes from the cornea to the retina over time with just one OCT device.

## A perfect fit for every practice

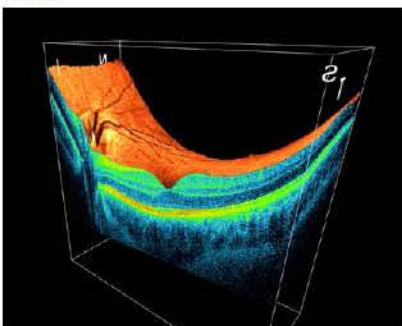
Small system footprint, various operator and patient positions and connection by a single cable allows the installation of SOCT Copernicus REVO into the smallest of examination room spaces. Revo's variety of examination and analysis tools enables it to effortlessly function as a screening or advanced diagnostic device.

## High quality of OCT image

The noise reduction technology provides the finest details proven to be important for early disease detection.



3d view



## RETINA

A single 3D macula scan performs both Retina and Ganglion cells analysis.

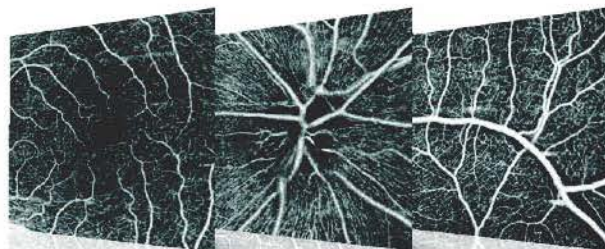
The software automatically recognises 8 retinal layers which assists with a precise diagnosis and the mapping of any changes in the patient's condition.



# SOCT Copernicus REVO offers all the newest standards available in Spectral OCT technology.

## ANGIOGRAPHY SOCT<sup>2,3</sup>

This non-invasive dye free technique allows the visualization of the microvasculature of the retina. Both blood flow and structural visualization will give additional information in the diagnosis of many retinal diseases. Angiography scan allows assessment of the structural vasculature of the macula, periphery or the optic disc. Extremely short scanning time 1.6 second in standard resolution or within ~3 seconds in high resolution.



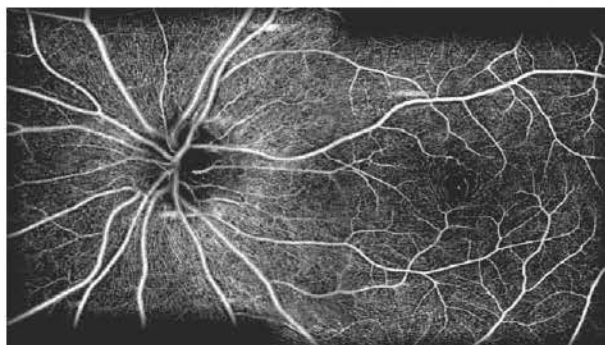
Mosaic mode: 10x6 mm

## ANGIOGRAPHY MOSAIC<sup>2,3</sup>

The Angiography mosaic delivers high-detailed images over large field of the retina. Available modes allow to see predefined region of the retina in a convenient way.

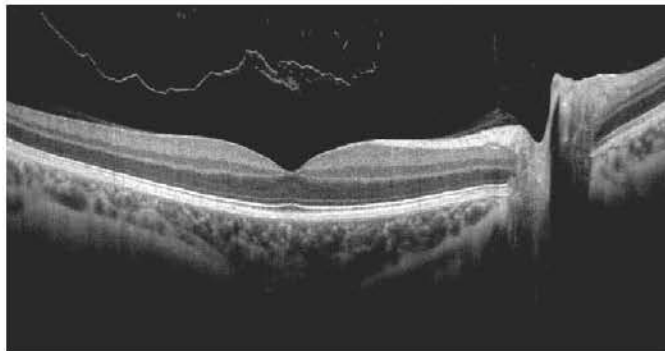
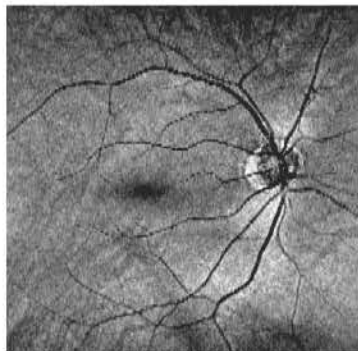
Manual mode allows to scan desired region. Analysis tools allow to see vascular layers, enface or thickness maps.

Dedicated FAZ, VFA tools allows to quantify and track changes.

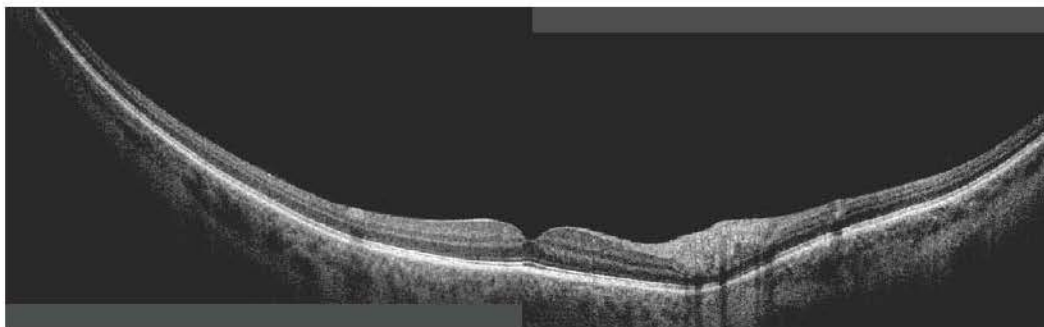


## WIDEFIELD SCAN

12x12 mm Widefield Central scan is perfect for fast and precise screening of the patient's retina.



Peripheral scanning reveals diseases in far periphery.



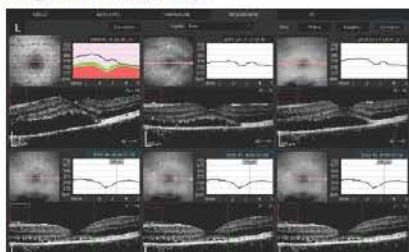
Combined view of two examinations of peripheral scan 12mm + 12mm. Done in external software.

## FOLLOW UP

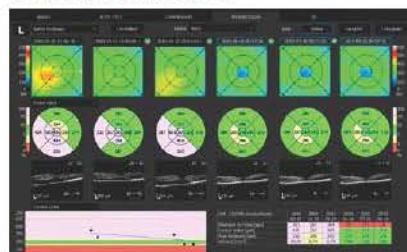
Revo's standard high density scanning capability and blood vessel structure recognition enable a precise alignment of past and current scans

Operator can analyze changes in morphology, quantified progression maps and evaluate the progression trends

### Progression Morphology



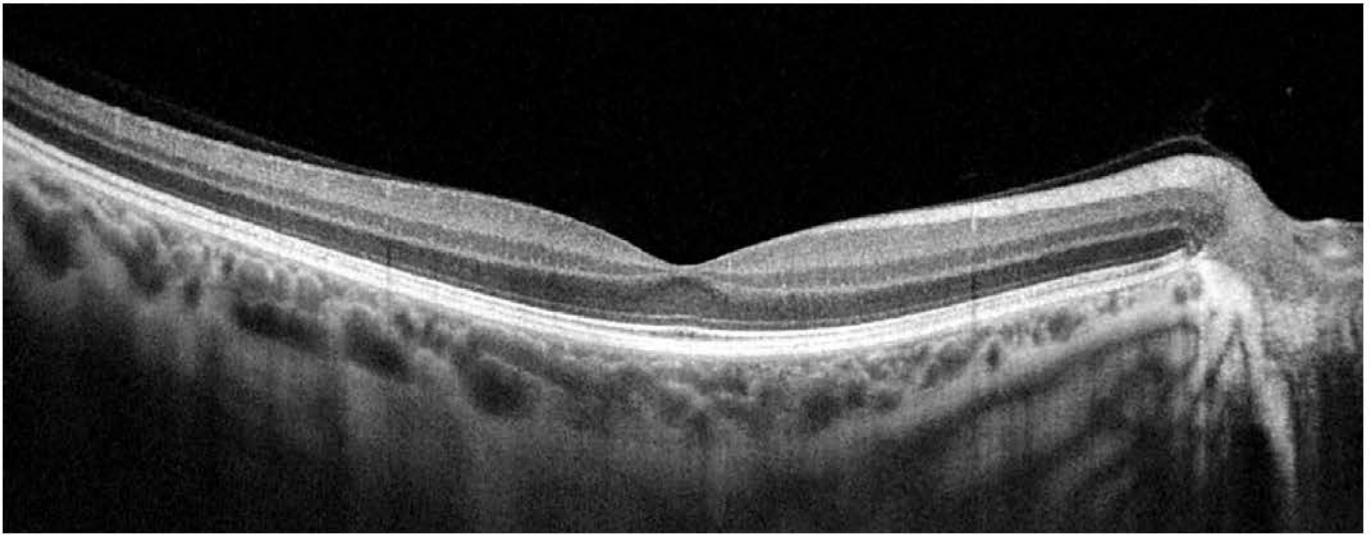
### Progression Quantification



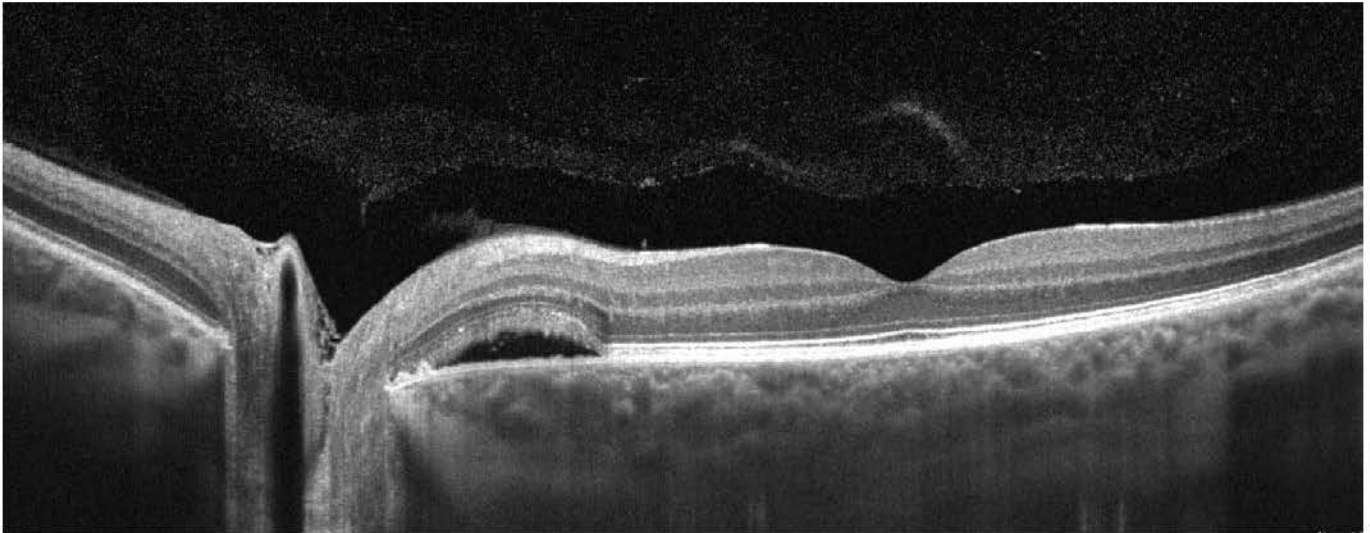




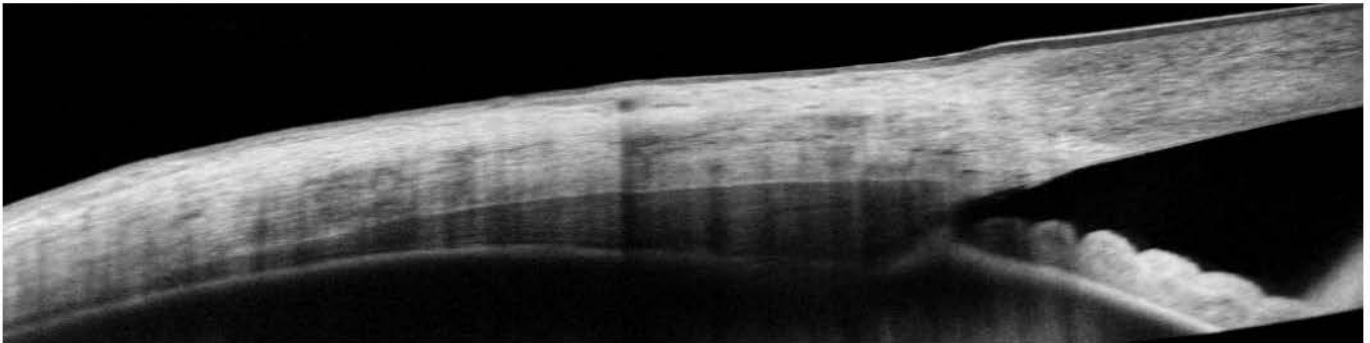
Choroidal observation



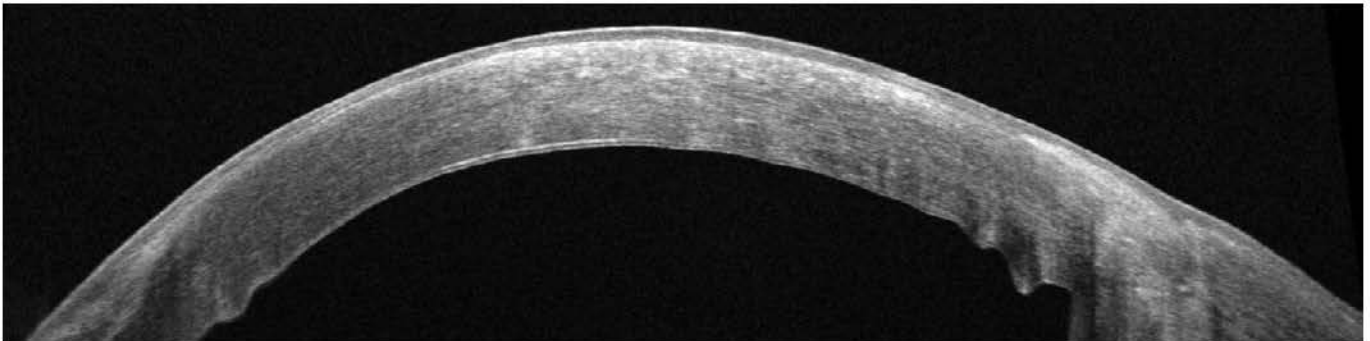
Wide Central scan



Sclera and Anterior Structure



Cornea wide scan





Technology	Spectral Domain OCT
Light source	SLED, wavelength 830 nm
Bandwidth	50 nm half bandwidth
Scanning speed	80 000 <sup>1</sup> / 27 000 measurements per second
Axial resolution	5 µm in tissue 2.6 µm digital
Transverse resolution	12 µm, typical 18 µm
Overall scan depth	2.4 mm
Minimum pupil size	3 mm
Focus adjustment range	-25 D to +25 D
Scan range	Posterior 5–12 mm, Angio <sup>2,3</sup> 3–6 mm, Anterior 3–16 mm
Scan types	3D, Angio <sup>2,3</sup> , Radial, B-scan, Raster, Cross
Fundus image	Live Fundus Reconstruction
Alignment method	Fully automatic, Automatic
Retina analysis	Retina thickness, Inner Retinal thickness, Outer Retinal thickness, RNFL+GCL+IPL thickness, GCL+IPL thickness, RNFL thickness, RPE deformation, IS/OS thickness
Angiography OCT <sup>2,3</sup>	Superficial Plexus, Deep Plexus, Outer Retina, Choriocapillaries, Choroid, Depth Coded, Custom, Enface, Thickness; FAZ, VAS, NFA tools
Angiography mosaic	Acquisition method: Auto, Manual Mosaic modes: 10×6 mm, Manual up to 12 images
Glaucoma analysis	RNFL, ONH morphology, DDLS, Ganglion analysis as RNFL+GCL+IP and GCL+IPL, OU and Hemisphere asymmetry
Biometry OCT <sup>3</sup>	AL, CCT, ACD, LT
Corneal Topography Map <sup>3</sup>	Axial [Anterior, Posterior], Refractive Power [Kerato, Anterior, Posterior, Total, Anterior, Posterior], Net, Axial True Net, Equivalent Keratometer, Elevation [Anterior, Posterior], Height
Anterior	Pachymetry map, Epithelium map, LASIK Flap assesment, Angle Assessment, AIOP, AOD 500/750, TISA 500/750
Anterior Wide Scan	Angle to Angle view (Adapter required)
Connectivity	DICOM Storage SCU, DICOM MWL SCU, CMDL, Networking
Dimensions (W×D×H)	382×549×462 mm
Weight	23 kg
Fixation target	OLED display (the target shape and position can be changed), external fixation arm
Power supply	100–240 V, 50/60 Hz
Power consumption	115–140 VA

<sup>1</sup> scanning speed is optional hardware feature and has to be selected when ordering

<sup>2</sup> only for SOCT Copernicus REVO with scanning speed 80 000 measurements per second

<sup>3</sup> optional software module to purchase