

Smartscope **FA**  
fundus fluorescein  
angiography

SMARTSCOPE | PRO

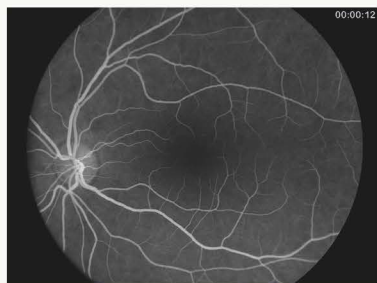
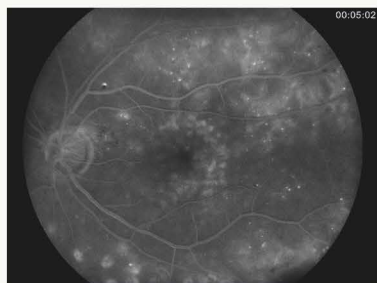
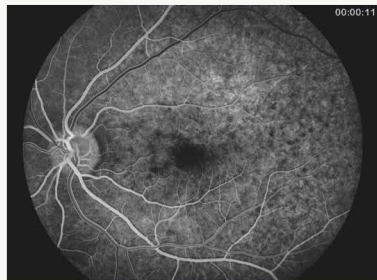
Simply Brilliant



OPTOMED

# Smartscope **FA** fundus fluorescein angiography

FA module with Smartscope M5 is an imaging tool that can be used hand-held or with a slit lamp adapter providing high quality Fluorescein Angiograms with 40 degrees field of view. Smartscope FA can be used with a wide range of patients from adults to babies. Due to its portability Smartscope FA is ideal in remote locations.



## Features of Smartscope FA optics module

- » High quality fundus Fluorescein Angiograms
- » With a special slit lamp adapter can be mounted to any slit lamp with patient head rest
- » 9 internal fixation targets for peripheral imaging (total FOV up to 70 x 52 degrees)
- » Wi-Fi for easy image transfer to any PC, laptop, tablet or mobile device
- » Timer display for effective data recording
- » Detailed visualization of filling and non-filling during the early and late phases of angiogram

## Technical specifications:

Photographic mode	Fluorescein Angiography
Field of view	40 degrees
Focus modes	Auto/Manual
Illumination for shooting	Blue LED
Fixation targets	9 internal fixation targets
Data recording	Timer
Image Sensor	5 Megapixels
Image format	JPEG, DICOM
Power supply	Rechargeable Ni-MH Battery
Dimensions	Smartscope M5: 82.30 (w) x 166.50 (h) x 66.50 (d) mm, 400 g Smartscope FA: 67 (w) x 73 (h) x 160 (d) mm, 300 g