

Inami



K-0391
Trial frames

Precise Positioning

K-0391 trial frames offers comfortable fit and smooth controls for precise and easy lifting. K-0391 position of axis can be determined from the circular scale on both sides of the frame to adapt the frame to various shapes of patients head.



Knob is below frame easy to adjust



Comfortable silicone nose pad



Aluminum Knob

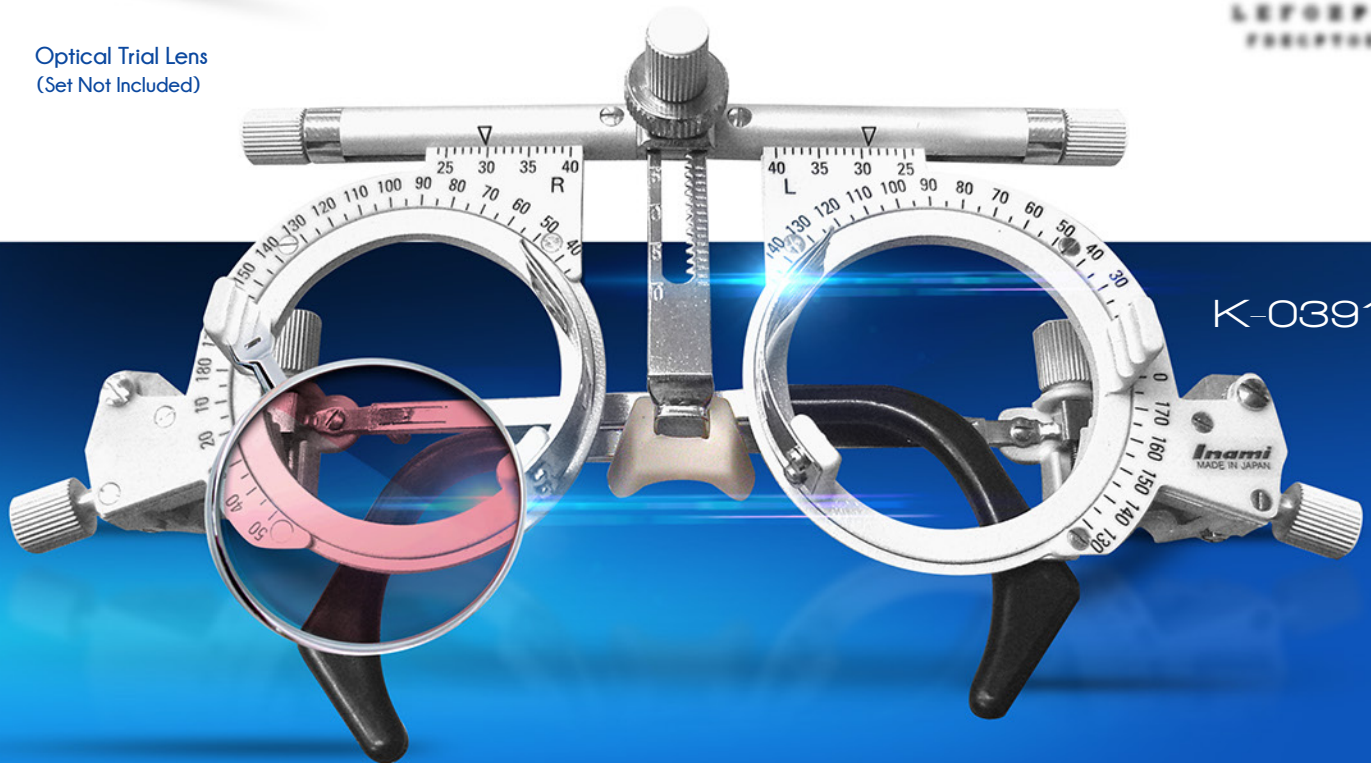
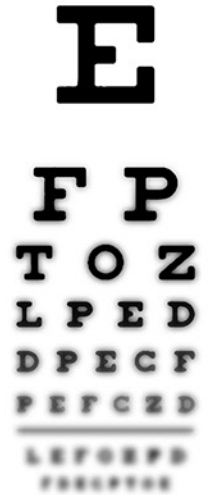


Adjustable Frame Temple



Optical Trial Lens
(Set Not Included)

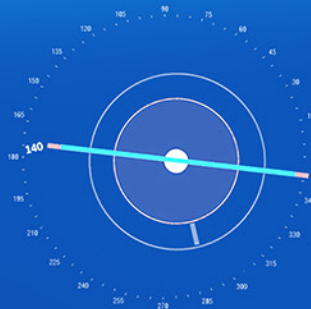
ETDRS - Early Treatment
Diabetic Retinopathy Study



K-0391-G

PD Adjustments

The K-0391 permits to adjust the PD, axis of the lens, frame length, and the position of the nose pad for a smooth measurement.



Test Chart Reading

K-0391 is designed with precise measurements through a Test Chart reading. K-0391 phoropter measures and determines patients spectacle lens prescription during and eye examination.



MADE IN JAPAN

Inami

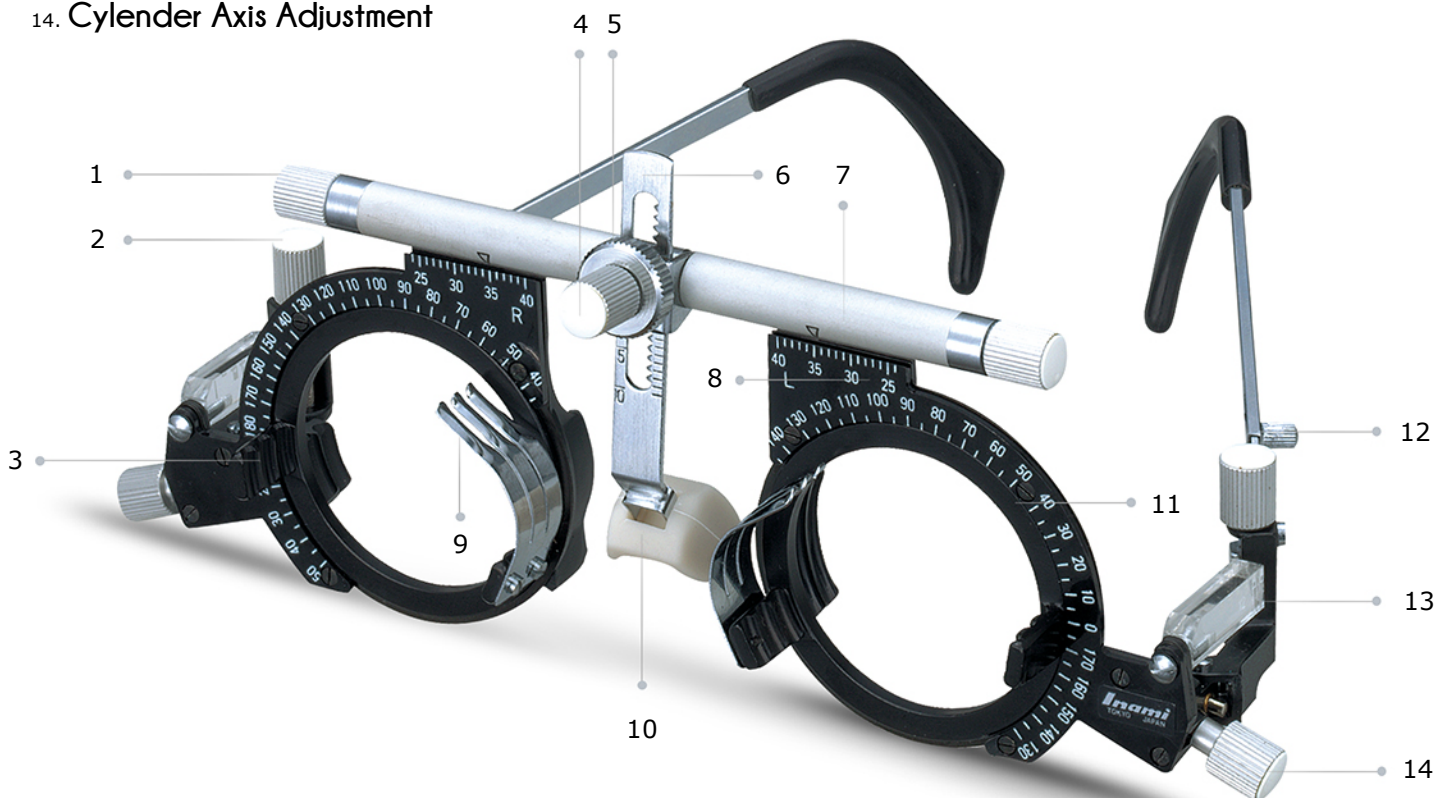
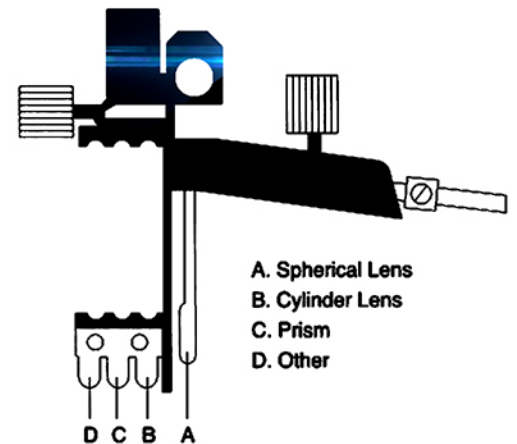
Trial Frames

K-0391

1. PD Adjustment Knob
2. Side Angle Adjustment
3. Lens Holder
4. Nose Pad Adjustment Knob
5. Nose Pad Position Fixation Knob
6. Nose Pad Adjustment Plate
7. Index for PD Measuring
8. Lens Axis Measurement
9. Lens Fixation Plate
10. Nose Pad
11. Cornea Position Measurement
12. Frame Length Adjustment Knob
13. Cornea Position Measurement
14. Cylinder Axis Adjustment



Trial Lenses are inserted into lens cells for refraction and visual acuity measurements



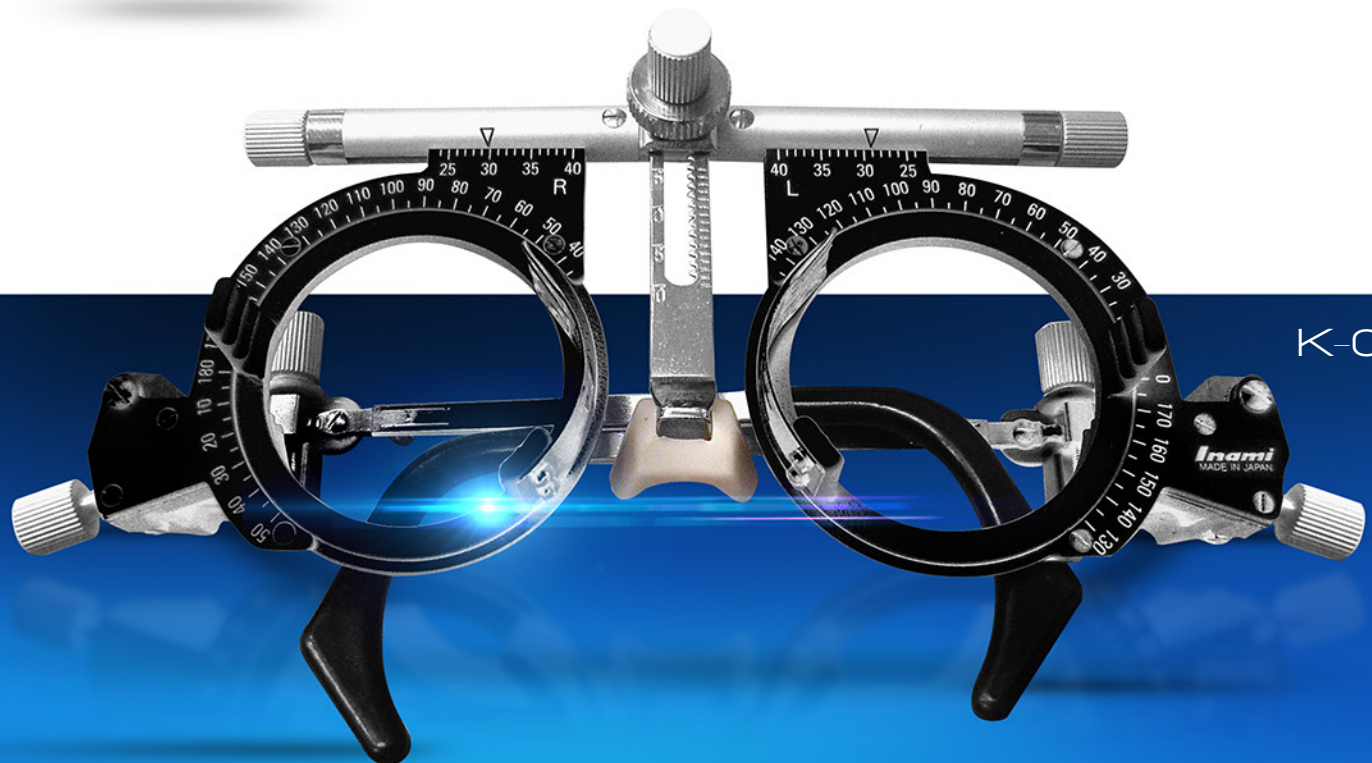
TRIAL FRAMES

The ergonomic design of Inami trial frames are a highly and durable instrument which features a quick and easy adjustment for both PD and corneal alignment.



Product Specifications

PD Distance	48-80mm (±0.8mm) Left or Right PD 24~180mm
Cornea Measuring Date	2mm Interval
Frame Adjustable Lens	35 (upward 30, downward 5)
Frame Adjustable Length	35mm
Nose Pad Adjustable Angles	360
Nose Pad Adjustable Legth	22mm
Maximum Available Lenses	10 pcs.
Axis of Lens	0° , 180°
Weight	72g
Maximum Interval Lens Frames	200mm
Inner Diameter of Lens Frame	Φ32.5mm
Maximum Interval Lens Frames	200mm
Axial Calibration on Each Disc	Left disc 120°~0°~135° Right disc 45°~180°~60°
Available Colors	White or Black



K-0391