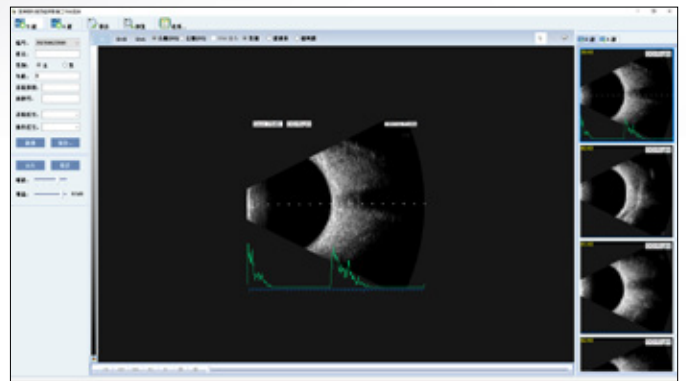
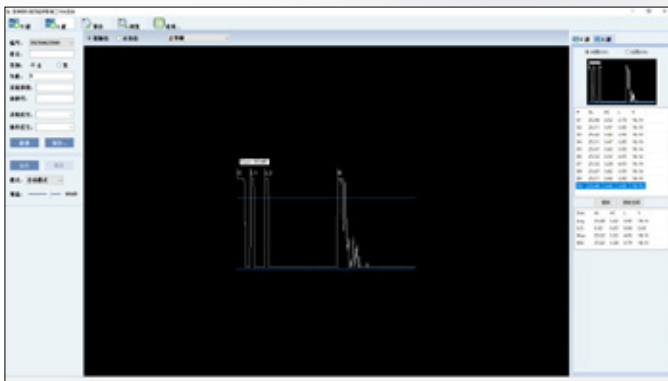




Features

- Modular ophthalmic ultrasound platform, allowing probes to be mixed and matched to meet different needs
- Easy-to-use workstation software, friendly user interface
- Industry-leading image quality and measurement accuracy
- Support DICOM 3.0



ULTRASOUND SW-2100

B Scan

- Frequency: 10MHz, Magnetic driven, noiseless
- Scanning Mode: Sector Scanning
- Scanning angle: 53°
- Resolution: Axial $\leq 0.2\text{mm}$, Lateral $\leq 0.3\text{mm}$
- Geometry position precision: Horizontal $\leq 3\%$, Vertical $\leq 2\%$
- Depth: 60mm
- Gray levels: 256
- Adjustable gain: 30dB ~ 105dB
- Time gain control (TGC): -15dB ~ +15dB
- Up to 100 images playback, support video export in AVI format
- Magnification function:
Multi-stage continuous magnification, real-time magnification
- Image analysis tools: false colors, areas, angles, lengths, markers, comments

A Scan

- Frequency: 10MHz, with LED
- Depth: 40mm
- Precision: $\pm 0.04\text{mm}$
- Measurement parameters: Anterior chamber depth, Lens thickness, Vitreous thickness, Axial length
- Adjustable gain: 30dB ~ 105dB
- Time gain control (TGC): -15dB ~ +15dB
- Record up to 10 measurement results, automatic calculation of average, standard deviation, maximum and minimum of the results
- Eye types: phakic, aphakic, PMMA, silicone, acrylic
- IOL Formula: SRK-II, SRK-T, HOFFER-Q, HOLLADAY, BINKHORST-II, HAIGIS



A/B SCAN