



# EUROTECH OPTICAL

Your partner in vision since 1989



Tel: 012 370 4175/3730/3735/1339/3470

0861 387 683 / (0861 EUROTECH)

Fax: 086 5513943

FAISAL - 082 793 0066 | AHMED 082 414 1472

[sales@eurotechoptical.com](mailto:sales@eurotechoptical.com)

[Ahmed-rihaz@eurotechoptical.com](mailto:Ahmed-rihaz@eurotechoptical.com)

[www.eurotechoptical.com](http://www.eurotechoptical.com)

Distributors of:



OZMA

Huvitz  
*Re:define. Re:create*

CHAROPS

soleko

OPTOPOL  
technology

EUROCAM

EURO HANDHELD  
AUTOREFRACTOR

VOLK

TonorITE

Kowa

OPTIKON

MeccanotticaMazza

TECH  
Chair & Stand

NEITZ

Sonomed Escalon

ACCUTOME  
A PALMA COMPANY

TOMEY  
TECHNOLOGY AND VISION

LIGHTMED  
Brightening vision

Neo vision



## DIGITAL FUNDUS CAMERA EUROCAM DEC 200



### HIGH-QUALITY IMAGING

- 5MP Image Resolution
- 45° Field of View

### SIMPLE TO USE

- Auto Shooting New!
- Lightweight and Prottable 500g



# DIGITAL FUNDUS CAMERA EUROCAM DEC 200

# NON-MYDRIATIC

## 3.5" TOUCH SCREEN



Intuitive User Interface

## INSTANT IMAGE TRANSFER



USB/SD Card / Wi-Fi SD Card (optional)

## EASY TO CONTROL

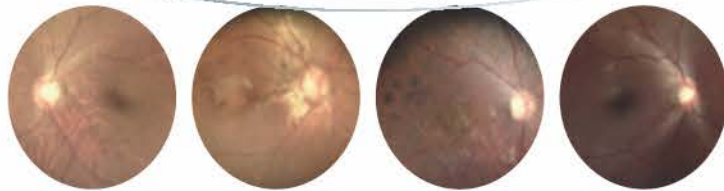


Simple and Straightforward

## SCENARIO



## THROUGH THE SCOPE



Normal    AMD    DME    Glaucoma

## OPTIONAL SOFTWARE PACKAGES



Optic Nerve Head Image System  
Optic Nerve Hemoglobin,  
C/D Ratio Analysis



Medical Image Management System

## TECHNICAL SPECIFICATION

Model	Horus+ Scope DEC 200, Digital Eye-Fundus Camera	Interface	Mini USB and AV output
Field of View	45 degree	Image Format	JPEG (Photograph) and H.264 (Video)
Focus Range	Auto Focus / Manual Focus -20D~+20D(diopter correction)	Dynamic Video Output	Composite AV out or USB live video enable
Dimension	20.90 cm*9.00 cm* 20.30 cm	File Storage	SD card , Supports 2GB to 32GB by FAT32 Format
Optical Source	Natural white light emitting diode (LED) or infrared LED	Power Supply	Rechargeable Lithium Battery 3.7V/2600mAh
Pupil Size	Non mydriatic operation (3.5 mm minimum pupil size)		
Camera Resolution	5 MP (2592 * 1944pixels)	Power Adapter Spec	Input :100~240 VAC, 50/60 Hz , 0.3A Output: 5V DC, 2A
Display	3.5" full color TFT-LCD Touch Panel		
Fixation Targets	7 internal fixation targets	Charging Time	5 Hours
Operating Distance	24 mm	Operating Time	3 Hours at 2.5 watt condition

\* Information contained in this leaflet is subject to change without prior notice.

# EUROCAM DIGITAL HANDHELD OTOSCOPE AND DERMATOSCOPE

## Digital Otoscope



## High-quality Digital Imaging

Eurocam Digital Handheld Otoscope brings more complete medical records and the static photos as well as the dynamic videos with extended focus range 5~30mm. The high resolution LCD and friendly user interface is good for communication, so the communication between the medical personnel and the patients is not only limited to the description of words.

- Intended use: Digital photograph for ear canal and tympanic membrane.
- Focus range: 5 ~ 30 mm
- Dimension: 9 x 9 x 19 cm
- Weight: 325 Grams
- Resolution: Full HD True 1920 x 1080
- Light source: Natural white LED
- White balance: Auto colour calibration
- LCD Display: 3.5" full colour LCD
- File format: JPEG (Still picture), H.264 (Video)
- Interface: Mini USB AV output
- Memory: Micro SD card
- Power: Li-ion rechargeable battery

## High-quality Digital Imaging

Eurocam Digital Handheld Dermatoscope brings more complete medical records and the static photos as well as the dynamic videos with extended focus range 5~30mm. The high resolution LCD and friendly user interface is good for communication, so the communication between the medical personnel and the patients is not only limited to the description of words.

- Intended use: Digital photograph for epidermis and dermis of skin.
- Field of view: 10mmØ
- Dimension: 8 x 9 x 19 cm
- Weight: 370 Grams
- Resolution: Full HD True 1920 x 1080
- Light source: Natural White LED
- LCD Display: 3.5" full colour LCD
- File format: JPEG (Still picture), H.264 (Video)
- Interface: Mini USB AV Output
- Memory: Micro SD card
- Power: Li-ion rechargeable battery

## Digital Dermatoscope



Distributors of:



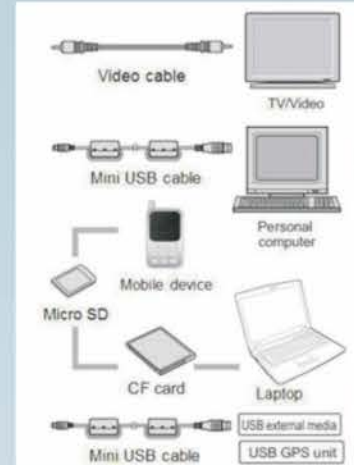
Tel: 012 370 4175 / 3730 / 3735 | 0861 387 683 / (0861 EUROTECH) | Fax: 086 5513943  
www.eurotechoptical.com | sales@aurotechoptical.com

# EUROCAM DIGITAL HANDHELD EYE FUNDUS CAMERA



## DEC 100

- True 1920 x 1080p
- Natural white LED
- 3.5" full-colour LCD



Lower Cost : Highest Quality : Special Discounts

- Optical field of view : 40°
- Diopter : -20 ~ + 20 D
- Size : 16 x 9 x 19cm
- Weight : 350 Grams
- Intended use : Digital photograph for eye-fundus

This medical device is provided to capture the digital photograph or video. Following the global trend of electronic medical records and telehealthcare networks, this people-oriented medical imaging product will be widely applied in the doctors offices, clinics, skilled nursing facilities and healthcare station.

1. Convenient features of Focus Adjustable (manual adjustment), white balance, brightness adjustable (higher light output intensity provides a much higher brightness, all can be done by a finger touch). Auto focus available
2. With a built-in USB connection port, the storage data can be uploaded to the laptop at anytime.
3. With a rechargeable Lithium-ion battery pack, no down-time compared with traditional AAA battery.
4. Special optical design allows a larger field of view (up to 40 degrees), to allow doctors to see what they want by eliminating the "searching" time by hooking the camera inner ear.
5. Color display of 3.5" TFT LCD monitor (medical grade) with ultra-high resolution
6. Mobility of data storage: with a micro SD card (16GB capacity) with file format of Video(H.264)/Audio/Image(JPEG), a fully digitized application for data processing after diagnosis
7. Lens made of highest-grade of optical fibers, allows the lens interchange among otoscope/dermatoscope/eye-fundus camera on the same platform
8. Specula fully compatible with Welch Allyn, including both the type for Adult use (4.25mm) \* Pediatric use (2.75mm), a cost-saving appeal for doctors who used to operate the Welch Allyn products.
9. Up to 5.9 megapixel resolution
10. Connectable to any practice management software
11. Lightest unit only 350gms, making it easy to carry around.
12. Camera can connect to any screen have an AV port or USB

# EUROCAM OPHTHALMOLOGY SET EUROCAM DEC 200



DEA200



Slit lamp Lens

DEC200



Eye Fundus Lens

DGC200



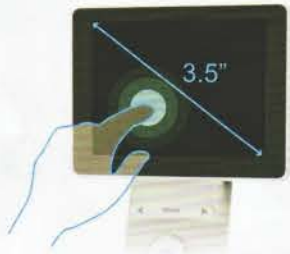
Eye Surface Lens

# EUROCAM DEC 200

## Digital Eye-Fundus Scope Wide angle FOV 45°, 5M pixels image



### 3.5" touch screen



3.5" screen is perfect for image capturing and reviewing, yet without sacrificing the mobility. The touch screen provides the portable fundus camera with a more intuitive user interface.

### 7 internal fixation points



Visual fixation points in the system enable the patient to fix where to look at and 7 fixation points can photographically cover a larger retina area up to 80°.

### Auto focus and power focus



Employing the auto focus feature, retina image capturing is easier and more sufficient. If there are certain cases required stepping focus, Horus scope can still fulfill your needs with power focus.

### UVC mode (Dual-screen)



Horus scope supports real time dual screens experience with an external USB cable to connect the device and a PC/ laptop. Utilizing UVC, tele-ophthalmology for eye screening over Internet is accessible.

[More](#)



Wi-Fi compatible



AV cable compatible



Multi-image modes: color/ Red-free/ IR mode



3 hours operation



Foot switch compatible



ISO ISO-10940 fundus camera standard

## Eurocam DEC 200



Clinics



Ward round



Pediatrics



Emergency



Telemedicine



Education



Veterinary



### Specification

Field of View	View Angle 45 degree
Focus Range	Auto Focus / Manual Focus -20D~+20D
Dimension	20.90 cm* 9.00 cm* 20.30 cm
Weight	500 grams
Optical Source	Natural white light emitting diode (LED) or infrared LED
Pupil Size	3.5 mm (minimum pupil size for non-mydratic operation)
Camera Resolution	5M pixels (2592*1944)
Display	3.5" full color TFT-LCD Touch Panel
Fixation Targets	7 internal fixation targets
Operating Distance	24 mm
Interface	Mini USB and AV output
Image Format	JPEG (Photograph) and H.264 (Video)
Dynamic Video Output	Composite AV out or USB live video enable
File storage	SD card , Supports 2GB to 32GB by FAT32 Format
Power Supply	Rechargeable Lithium Battery 3.7V/2600mAh
Power Adapter Source	Input :100~240 VAC, 50/60 Hz , 0.3A Output: 5V DC, 2A
Charger Station Input	5V DC, 1.2A
Charging Time	5 Hours
Operating Time	3 Hours at 2.5 watt condition
Accessories	Foot-Switch, Slit Lamp Jig, Table mount module (Chin-Rest+Metal Base) Review Software, Wireless transmit adapter

All information is for reference. Information contained in this leaflet is subject to change without prior notice.