

AUTOMATED PERIMETER AP-800

COMPACT PERIMETER

DELIGHT IN SIGHT

Ultimate precision and comfort.
Easy to use.



- High reproducibility
- LED-technology
- Easy and fast operation
- Early Glaucoma detection
- Multiple illustration possibilities
- Small, compact and portable
- Reliable fixation control / digital eye tracking

 **TOMEY**
TECHNOLOGY AND VISION

THE TOMHEY AUTOMATED PERIMETER AP-800

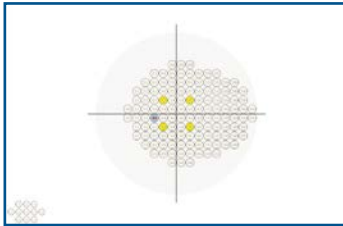


QUALITY IN DETAIL

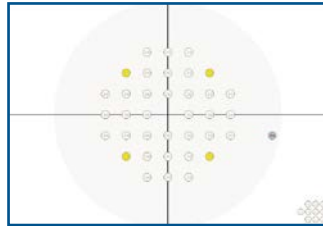
A literally 'easy-to-handle' solution for modern perimetry and screening – the **AP-800** is a compact, portable and mobile device combined with the advantage of a hemispherical perimeter. Shielded insight, electronically controlled chin rest and last but not least a structured and user optimised application software are only a few out of many other nameable points. The software operation plus features as customised menu configuration and follow-up pattern appliance make the **AP-800** an ideal working equipment.

TEST FIELDS

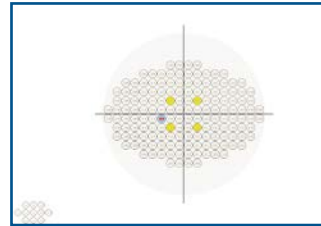
The forthcoming test fields allow an extensive Glaucoma screening besides the standard testing.



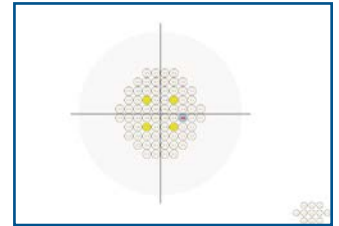
Field „Glaucoma“



Field „Macula“



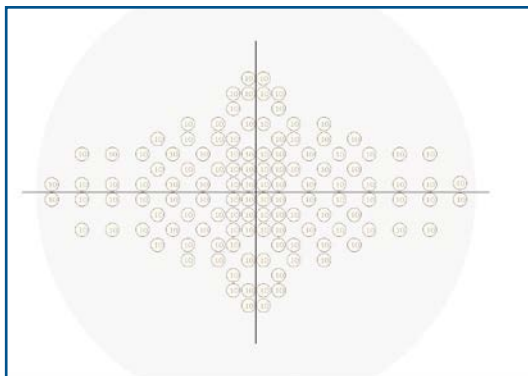
Field „Full“



Field „Central“

TOP OF FEATURE

Even our smallest perimeter allows binocular examination.



Field „Bi-driving“



Chin rest

Ergonomic and electronically controlled (up/down) chin rest for monocular and binocular testing.

SPECIFICATIONS

PERIMETER FUNCTION

Stimulus bowl type	Part hemispherical
Bowl radius	300 mm
Eccentricity	50° horizontal (+30° mov. fix. point) 30° vertical (+10° mov. fix. point)
Background illumination	10 cd/m ² (32 asb), auto level control
Stimulus	LED, white, Goldmann III
Stimulus intensity	0.01 cd/m ² (0.03 asb) to 333,33 cd/m ² (1000 asb), 3 dB/1 dB
Exposure time	0.1 to 9.9 sec. adjustable
Chin rest adjustment	Electrically controlled
Fixation control	Heijl Krakau (blind spot method) and CCD camera (digital eye tracking)
User interface	Multilingual
DIMENSIONS & ELECTRIC REQUIREMENTS	
Dimensions WDH	548 x 450 x 382 mm
Weight	Approx. 9 kg
Input	115 to 230 V
Frequency	50/60 Hz
Power consumption	Max. 60 V

2016/01 - subject to change without notice

