

SALES GUIDE 2020

# Optomed Aurora IQ

OPT  MED

*Copy approved for external use*

# Why Aurora IQ?



**Detecting early stage changes in the retina requires high optical performance**

This is now possible for the first time in handheld cameras with Aurora IQ redesigned high contrast optics



**Medical professionals have less time to spend with one patient**

High need for simple medical devices  
Aurora IQ smart features simplify the use and settings of the camera



**In today's digital world, there is a need for**

- Connecting to various hospital systems
  - Secure data transfer and storage
    - Fast and reliable analysis

We have tackled these demands with Aurora IQ versatile connectivity

NOW LAUNCHING:

# Optomed Aurora IQ

1. Image Quality Upgrade
2. New Intelligent Features for Remarkable Usability
3. Versatile Connectivity



**OPTOMED**

*Copy approved for external use*

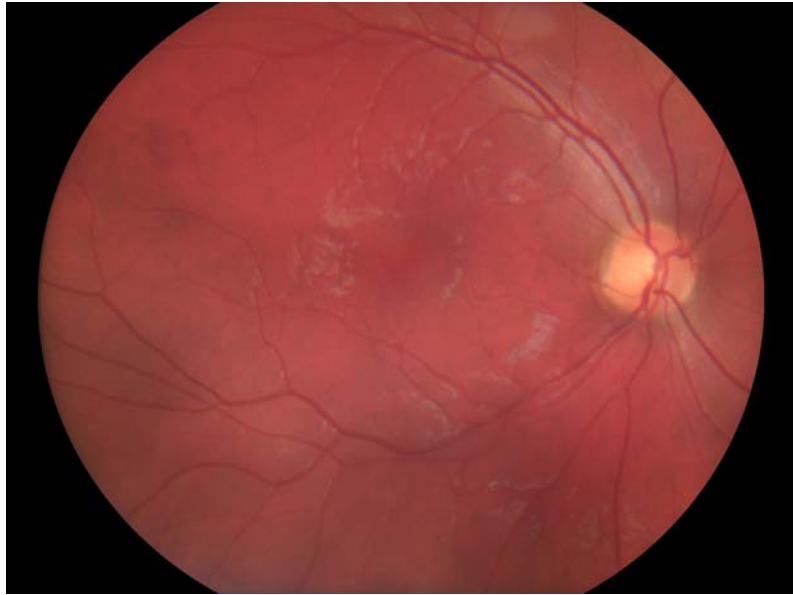
# Optomed Aurora IQ

## 1. Image quality upgrade

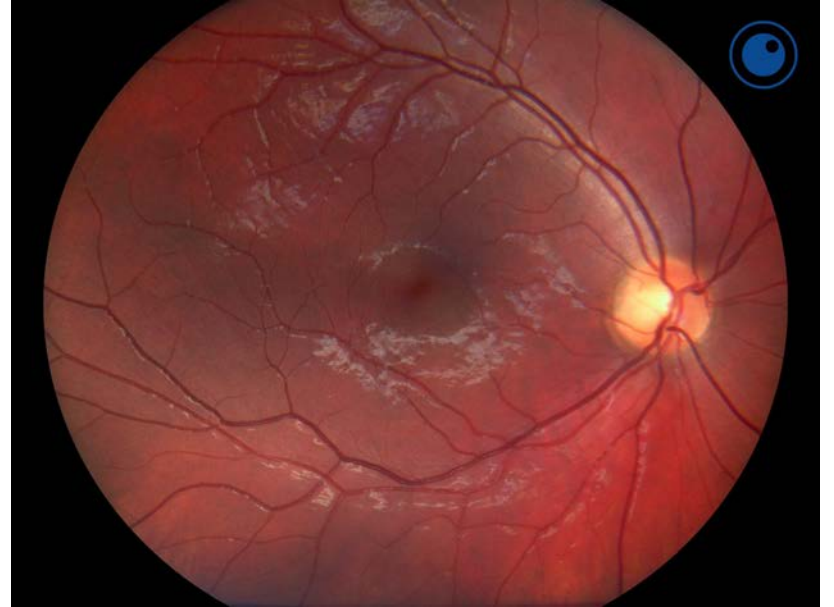
- Re-designed optics
- Optical improvement method
- Enhanced image contrast compared to conventional illumination methods



# Optomed Aurora



# Optomed Aurora IQ



*Copy approved for external use*



# Optomed Aurora IQ

## 2. New Intelligent Features

- Improved usability
- Automatic image exposure
- Improved user experience
- Pin code
- Patient identification in camera



# Optomed Aurora

Incorrect manual brightness



# Optomed Aurora IQ

Auto IQ autoexposure



*Copy approved for external use*



# Optomed Aurora IQ

## 3. Versatile Connectivity

- Wireless menu
- Network selection
- Cloud service
- Option of Integrated Artificial Intelligence (AI)
  - AI for identifying diabetic retinopathy, AMD and suspected glaucoma
  - Results can be read from camera screen in minutes
  - Affordable and fast way to perform retinal screening
  - Can be taken to any health care clinic and integrated to hospital systems







## Optomed Aurora IQ

- Image quality upgrade for reliable diagnosis
- Easy to use with New Intelligent Features
- Versatile and secure connectivity to hospital systems
- Fast and consistent image analysis with Integrated AI

*Copy approved for external use*

**OPTOMED**

**OPT****MED**  
CORPORATION