

VUNO Med[®]-Fundus AI[™] for Huvitz Fundus camera

Issued date : 11 Jan., 2022

Updated date : 12 May, 2023

- **Model Number : VN-M-03**
 - **Product : Artificial intelligence software optimized for HUVITZ fundus camera**
 - **Manufacture : VUNO inc.**

- **Target Customer :**
 - **VUNO AI with HFC-1 : Internal medicine clinic(Primary care clinic), diabetes center, Eye-clinic, Optical store and etc.**
 - **VUNO AI with HOCT-1F : Eye clinic and Optical store**
 - **In Korea the demand for VUNO AI with HFC-1 in internal medicine clinics is much higher than VUNO AI with HOCT-1F in ophthalmic clinics. The main target customer for the fundus AI can be Non-Ophthalmologists.**

- **How to place order with Huvitz**
 - **① placing order with the serial number of HFC(HOCT) ② receiving a set-up file of Vuno AI (vuno_fundusai_win_1.0.0_setup) from Huvitz by email and installing it in HFC ③ extracting an unique key(text) of VUNO AI from HFC ④ sending the unique key to Huvitz by email ⑤ receiving a license key from Huvitz and activating AI function in HFC**

Price : End-user price can be determined by distributor

Item#	Number of Credit (1 credit = Monocular examination)	Validity of License	Unit price	
			FOB	Recommended End-User
#1 2K-1Y-License	2,000 credits	1 year	\$ 1,450	\$ 2,250
#2 10K-5Y-License	10,000 credits	5 years	\$ 2,900	\$ 4,500
#3 20K-8Y-License	20,000 credits	8 years	\$ 4,350	\$ 6,800
Optional Only for #2, #3 License users	1000 credits	2 years	\$ 600	\$ 900

Other conditions :

- **VN-M-03 is the product supplied by VUNO inc. which is liable for all the things caused by its product.**
- **No performance guarantee on images under the age of 19.**
- **The detection of fundus abnormalities is shown only on the screen of the machines (Not in web-viewer)**

gildong hong
00162

OD OU **OS**

OD : 21.10.21 / 10:06:28
OS : 21.10.21 / 09:25:43
Fundus Single

MEASURE
REPORT
EXPORT
DICOM EXPORT
COMMENT

Vascular Abnormality
Membrane
Hemorrhage
Hard Exudate
Chorioretinal Atrophy/Scar

RGB R G B

Brightness
Reset 3.03

Contrast
Reset -47.14

UB
Reset 1.00

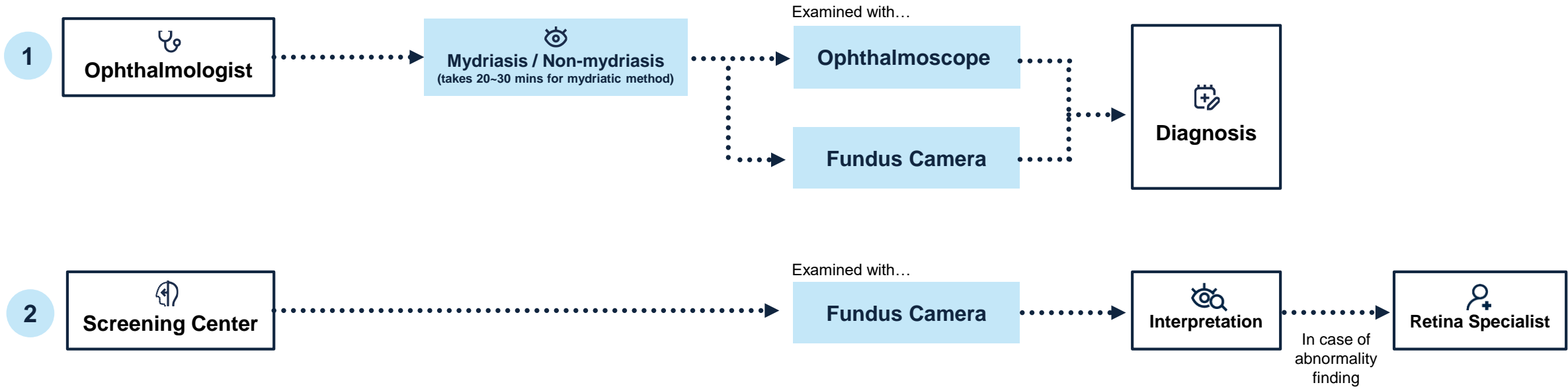
VR
Reset 1.00

All Reset Save

VUNO AI

- Hemorrhage
- Hard Exudate
- Cotton Wool Patch
- Drusen
- Membrane
- Macular Hole
- Myelinated Nerve Fiber
- Chorioretinal Atrophy
- Vascular Abnormality
- Retinal Nerve Fiber Layer Defect
- Glaucomatous Disc Change
- Non-glaucomatous Disc Change

Press the button



Practice	Pain Points
<ul style="list-style-type: none"> An ophthalmologist can directly examine the eyes by using special instruments such as schematic glasses, and dipole, and take a photograph of the fundus with a special camera for fundus examination In health screening centers, only preliminary screening is available, and patients are informed of the need for further examination through retina specialists (or ophthalmologists) for accurate diagnosis. 	<ul style="list-style-type: none"> It takes extra time for examination with mydriasis For health screening centers, accurate diagnosis may be difficult.

General

- 1) VUNO Med® - Fundus AI™ is not a stand-alone diagnostic tool that can make a decision alone; hence requires professional judgement from the user.
- 2) There is a chance of misdiagnosis when a medical decision of diagnosis and treatment is made solely based on this solution.
- 3) The user is held responsible for the VUNO Med® - Fundus AI™ assisted final diagnosis.