

Fiberion



Ophthalmic
Laser Probes

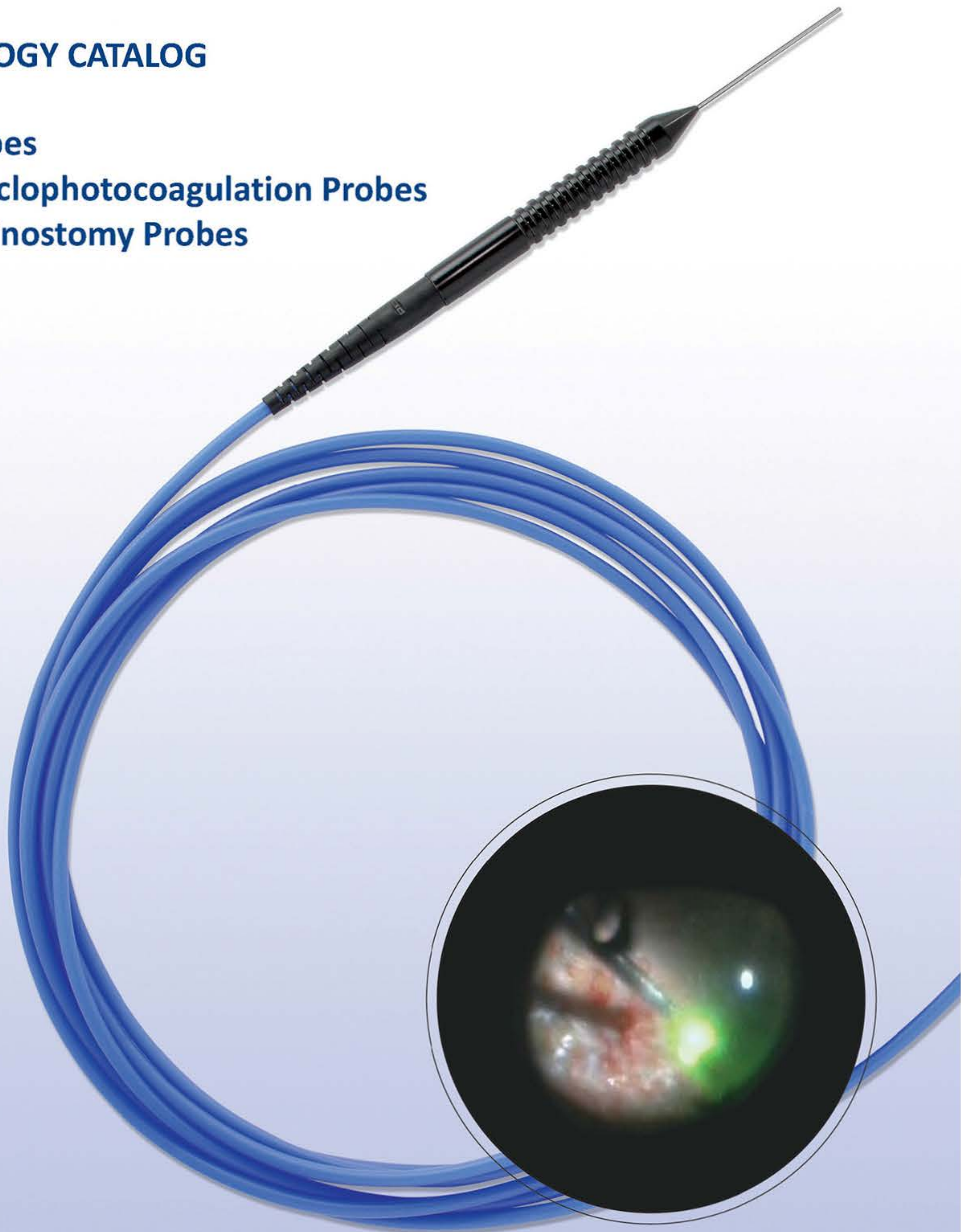
2020

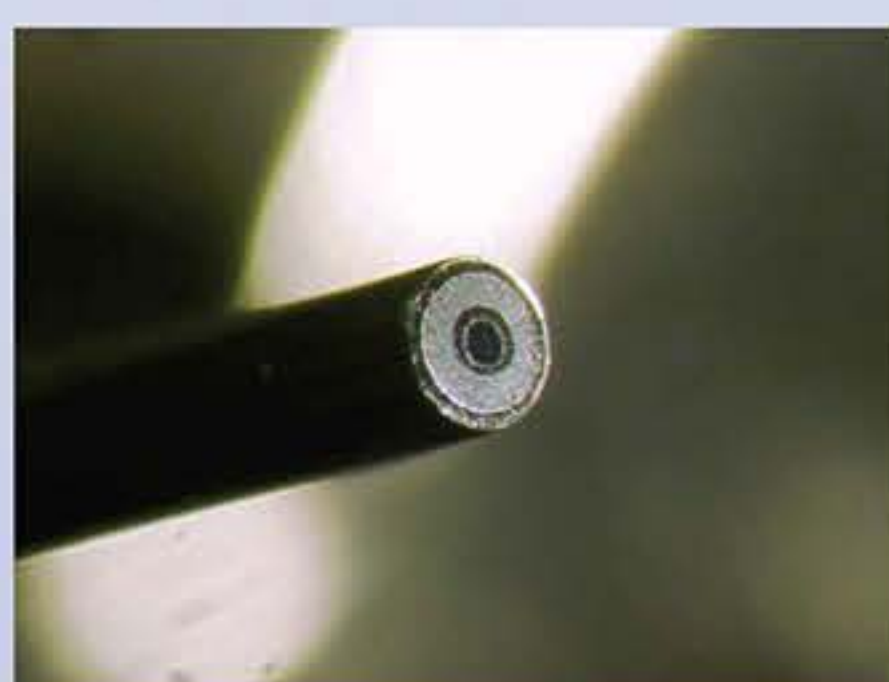
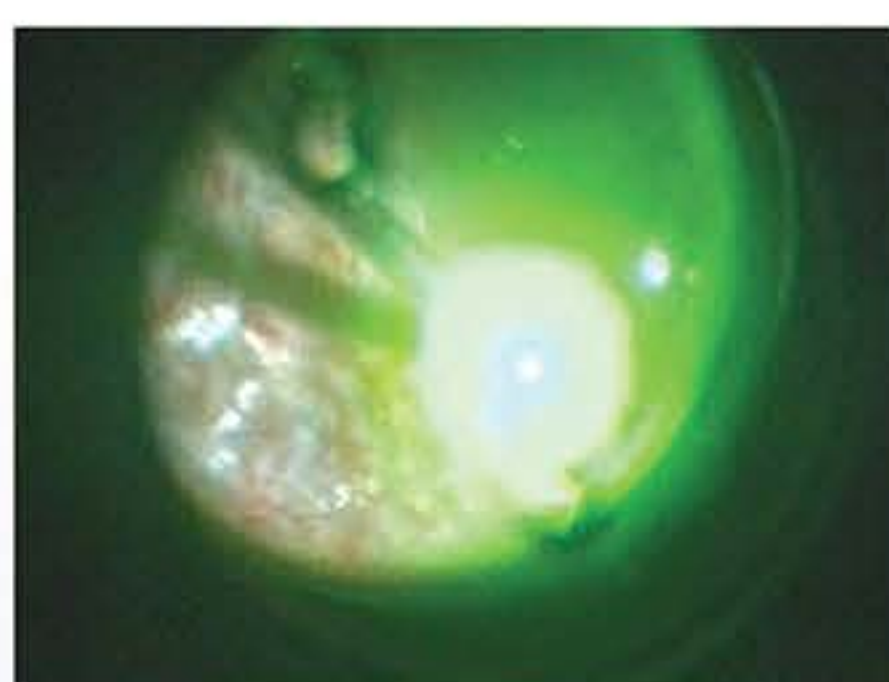
OPHTHALMOLOGY CATALOG

Endolaser Probes

Transscleral Cyclophotocoagulation Probes

Dacryocystorhinostomy Probes





- 20G, 23G, 25G and 27G series
- Straight or angled tip
- Wide range of connectors and laser compatibility
- Highest standards : individual serial number and quality record for each probe



SMA 905 connector compatible with

Alcon 532 EyeLite, Zeiss Visulas 532, Meridian, Ellex Solitaire, Valon lasers

GAUGE	STRAIGHT TIP	ANGLED TIP
20G	SMA-20-S	SMA-20-A
23G	SMA-23-S	SMA-23-A
25G	SMA-25-S	SMA-25-A
27G	SMA-27-S	



SMA



Extended SMA 905 connector compatible with

Alcon Constellation (RFID off), Lightmed, Opto lasers

GAUGE	STRAIGHT TIP	ANGLED TIP
20G	E-SMA-20-S	E-SMA-20-A
23G	E-SMA-23-S	E-SMA-23-A
25G	E-SMA-25-S	E-SMA-25-A
27G	E-SMA-27-S	



E-SMA



Extended SMA 906 connector compatible with

Nidek GYC-1000 lasers

GAUGE	STRAIGHT TIP	ANGLED TIP
20G	E-906-20-S	E-906-20-A
23G	E-906-23-S	E-906-23-A
25G	E-906-25-S	E-906-25-A
27G	E-906-27-S	



E-906

I-SMA connector compatible with **Iridex lasers**

GAUGE	STRAIGHT TIP	ANGLED TIP
20G	I-SMA-20-S	I-SMA-20-A
23G	I-SMA-23-S	I-SMA-23-A
25G	I-SMA-25-S	I-SMA-25-A
27G	I-SMA-27-S	



I-SMA



Elongated ST connector compatible with **Quantel Vitra & Supra lasers**

GAUGE	STRAIGHT TIP	ANGLED TIP
20G	STA-20-S	STA-20-A
23G	STA-23-S	STA-23-A
25G	STA-25-S	STA-25-A
27G	STA-27-S	



STA



D connector compatible with **DORC lasers**

GAUGE	STRAIGHT TIP	ANGLED TIP
20G	D-20-S	D-20-A
23G	D-23-S	D-23-A
25G	D-25-S	D-25-A
27G	D-27-S	



D

Cylindrical connector compatible with **HGM lasers (no barcode)**

GAUGE	STRAIGHT TIP	ANGLED TIP
20G	E-CYL-20-S	E-CYL-20-A
23G	E-CYL-23-S	



E-CYL



K connector compatible with **Lumenis lasers**

GAUGE	STRAIGHT TIP	ANGLED TIP
20G	K-20-S	K-20-A
23G	K-23-S	K-23-A
25G	K-25-S	K-25-A
27G	K-27-S	



K



SMA connector with long handle compatible with **Zeiss Visulas II Argon lasers**

GAUGE	STRAIGHT TIP	ANGLED TIP
20G	U-SMA-20-S	U-SMA-20-A
23G	U-SMA-23-S	U-SMA-23-A
25G	U-SMA-25-S	U-SMA-25-A
27G	U-SMA-27-S	



U-SMA

Single use



**TRANSSCLERAL
CYCLOPHOTOCOAGULATION
PROBES**

for the treatment of

GLAUCOMA

for use with 810 nm ophthalmic
CW diode lasers

CATALOG NO.	COMPATIBLE WITH
SMA-TC	Keeler and other 810 nm ophthalmic CW diode laser units using SMA 905 connector
E-SMA-TC	Lightmed Lightlas 810 and Opto 810 ophthalmic laser units
STA-TC	Quantel Supra 810 ophthalmic laser units
I-SMA-TC	Iridex OcuLight SL, OcuLight SLx and IQ810 ophthalmic laser units



SMA



E-SMA



STA



I-SMA



Single use



**DACRYOCYSTORHINOSTOMY
(DCR)
PROBES**

600 micron fiber core
for high power capability

710 micron fiber outer diameter
for easy insertion

The world's finest

CATALOG NO.	COMPATIBLE WITH
SMA-DCR-600	400-1600 nm CW lasers with SMA 905 connector
E-SMA-DCR-600	400-1600 nm CW lasers with Extended SMA 905 connector



SMA



E-SMA

PRODUCT AVAILABILITY IS COUNTRY-DEPENDENT

Emtron, Fiberion and their respective logos are registered trademarks of Emtron Limited Sirketi
All trademarks belong to their respective owners



ISO 13485:2016